

CAMPECHE

---RED FEDERAL LIBRE---

1 Campeche - Mérida	MEX-180
2 Campeche - Tixmucuy	MEX-180
3 Campeche - Umán	MEX-261
4 Cd. del Carmen - Campeche	MEX-180
5 Chencoyi - Tenabo	MEX-180
6 Dzitbalché - Ent. San Bernardo	MEX-180
7 Francisco Escárcega - Champotón	MEX-261
8 Francisco Escárcega - Chetumal	MEX-186-307
9 Haltunchén - San Antonio Cayal	MEX-180
10 Periférico Pablo García y Montilla (Libramiento de Campeche)	MEX-202
11 Presidente Díaz Ordaz - Sabancuy	MEX-186
12 Ramal a Nuevo Coahuila	MEX-186
13 Ramal a Ruíz Cortines	MEX-180
14 San Marcos - Palizada	MEX-186
15 Villahermosa - Cd. del Carmen	MEX-180
16 Villahermosa - Francisco Escárcega	MEX-186-307

---RED FEDERAL DE CUOTA---

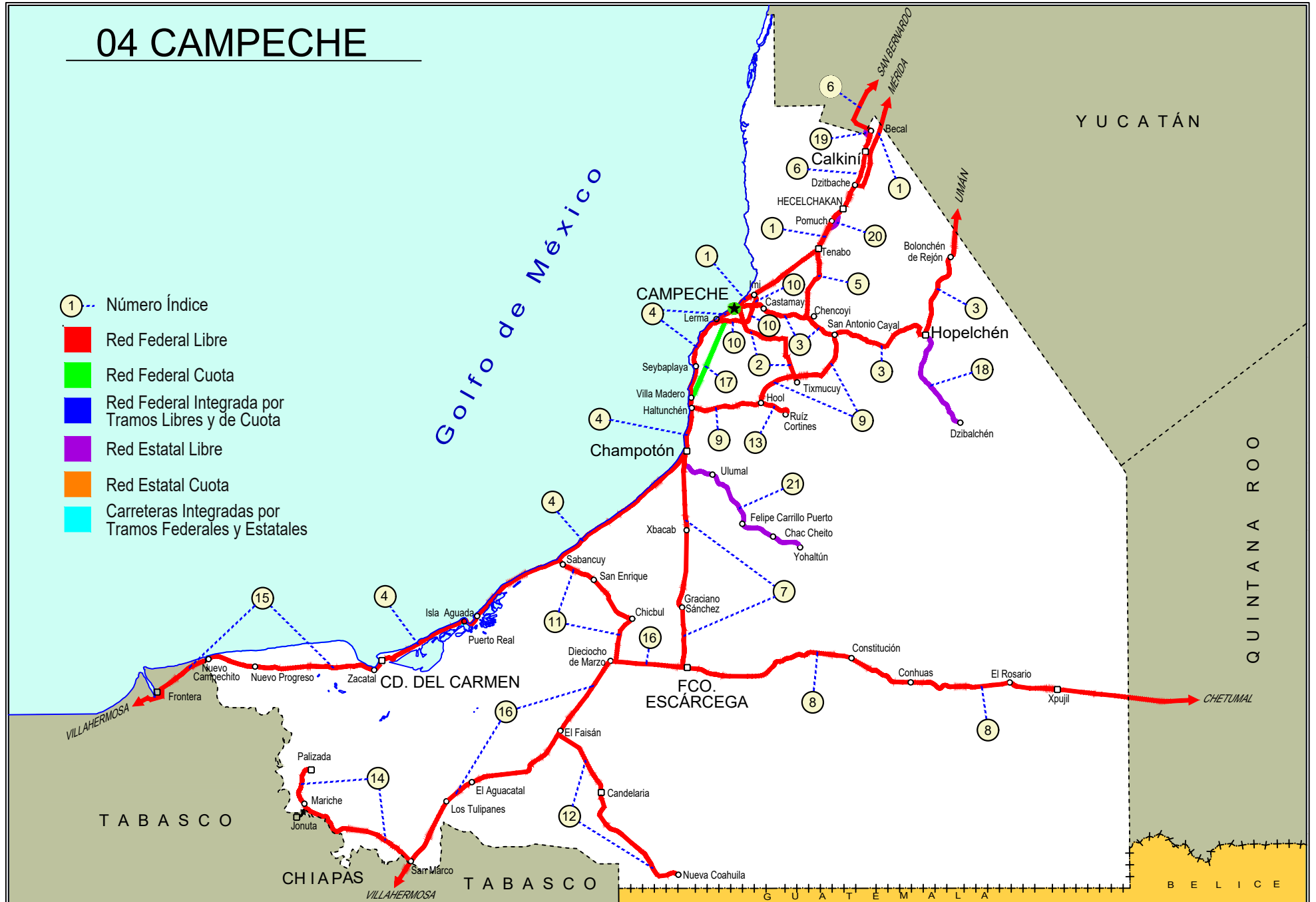
17 Champotón - Campeche (Cuota)	MEX-180D
---------------------------------	----------

---RED ESTATAL LIBRE---

18 Hopelchén - Dzibalchén	CAM-261
19 Libramiento de Becal	CAM
20 Libramiento de Pomuch	CAM
21 T. C. (Francisco Escárcega - Champotón) - Yohaltún	CAM

04 CAMPECHE

- ① --- Número Índice
- Red Federal Libre
- Red Federal Cuota
- Red Federal Integrada por Tramos Libres y de Cuota
- Red Estatal Libre
- Red Estatal Cuota
- Carreteras Integradas por Tramos Federales y Estatales



CAMPECHE

1 CARR: Campeche - Mérida

CLAVE: 00066

RUTA: MEX-180

AÑO: 2025

LUGAR	ESTACION				CLASIFICACION VEHICULAR EN PORCIENTO										COORDENADAS					
	KM	TE	SC	TDPA	M	A	B	C2	C3	T3S2	T3S3	T3S2R4	OTROS	A	B	C	K'	D	LATITUD	LONGITUD
Campeche	0.00	3	1	5017	10.2	79.1	1.1	6.3	1.6	0.7	0.3	0.5	0.2	89.3	1.1	9.6	0.081	0.542	19.890148	-90.468154
Campeche	0.00	3	2	4575	9.9	80.4	0.9	5.9	1.1	0.5	0.4	0.7	0.2	90.3	0.9	8.8	0.082	0.542	19.890219	-90.468212
T. Der. Periferico Pablo García y Montilla (Libramiento De Campeche)	9.85	3	1	8642	5.1	73.2	2.9	6.5	1.5	5.7	1.3	3.5	0.3	78.3	2.9	18.8	0.078	0.571	19.895631	-90.457004
T. Der. Periferico Pablo García y Montilla (Libramiento De Campeche)	9.85	3	2	8666	5.0	73.8	3.4	6.2	1.9	5.4	0.9	2.8	0.6	78.8	3.4	17.8	0.062	0.571	19.897107	-90.454748
T. Der. Hampolol (2do Acceso)	20.00	1	1	6733	4.2	71.3	3.4	2.9	4.2	8.4	1.5	3.3	0.8	75.5	3.4	21.1	0.066	0.576	19.933494	-90.383470
T. Der. Hampolol (2do Acceso)	20.00	1	2	6360	3.6	70.2	3.1	2.7	4.9	8.8	1.9	3.8	1.0	73.8	3.1	23.1	0.083	0.576	19.933603	-90.383527
Acceso a Tenabo	38.30	1	1	6955	4.5	75.0	2.7	4.6	1.2	6.8	1.5	3.2	0.5	79.5	2.7	17.8	0.080	0.562	20.027095	-90.243530
Acceso a Tenabo	38.30	1	2	6731	4.3	74.0	2.4	5.0	1.1	6.5	1.9	3.9	0.9	78.3	2.4	19.3	0.074	0.562	20.027201	-90.243594
X. C. Chencoyi - Tenabo	39.50	1	1	7712	3.3	74.8	3.4	2.5	4.6	7.4	1.2	2.4	0.4	78.1	3.4	18.5	0.069	0.528	20.031059	-90.231319
X. C. Chencoyi - Tenabo	39.50	1	2	7121	3.4	73.7	3.7	2.9	4.4	7.5	1.2	2.3	0.9	77.1	3.7	19.2	0.071	0.528	20.031156	-90.231256
Tenabo	40.00	3	1	6701	3.1	72.1	5.0	3.2	2.3	6.3	2.5	4.6	0.9	75.2	5.0	19.8	0.078	0.555	20.055786	-90.213672
Tenabo	40.00	3	2	6884	2.9	72.6	5.2	3.0	2.5	6.1	2.9	4.0	0.8	75.5	5.2	19.3	0.077	0.555	20.055793	-90.213791
T. Lib de Pomuch Sur	50.80	1	1	7150	4.2	70.8	4.7	4.1	3.9	7.1	1.2	3.2	0.8	75.0	4.7	20.3	0.070	0.565	20.113684	-90.187986
T. Lib de Pomuch Sur	50.80	1	2	6917	4.3	71.1	4.1	3.7	3.6	7.7	0.8	3.8	0.9	75.4	4.1	20.5	0.067	0.565	20.113748	-90.188097
T. Lib de Pomuch Norte	54.80	3	1	7869	7.8	71.5	4.1	2.3	1.4	7.5	1.3	3.4	0.7	79.3	4.1	16.6	0.076	0.555	20.153441	-90.159830
T. Lib de Pomuch Norte	54.80	3	2	7727	7.6	71.3	3.8	2.9	1.8	6.9	0.9	3.9	0.9	78.9	3.8	17.3	0.066	0.555	20.153542	-90.159895
T. C. Acceso a Hecelchakan	57.60	3	1	6890	5.1	70.3	4.4	3.0	2.2	9.2	1.1	3.9	0.8	75.4	4.4	20.2	0.073	0.519	20.165870	-90.141623
T. C. Acceso a Hecelchakan	57.60	3	2	6256	5.2	69.9	4.1	3.2	2.4	8.9	1.2	4.3	0.8	75.1	4.1	20.8	0.075	0.519	20.165948	-90.141675
T. C. Hecelchakan - (T. C. Holpelchen - Bolonchen)	61.20	3	1	6488	4.0	73.2	3.1	3.7	2.3	8.1	1.3	3.4	0.9	77.2	3.1	19.7	0.071	0.505	20.189986	-90.118618
T. C. Hecelchakan - (T. C. Holpelchen - Bolonchen)	61.20	3	2	5547	3.4	73.4	3.2	4.0	2.1	8.5	0.9	3.5	1.0	76.8	3.2	20.0	0.075	0.505	20.190042	-90.118734
Poc Boc	69.00	3	1	6882	4.6	70.0	3.5	3.6	2.0	8.8	1.6	5.1	0.8	74.6	3.5	21.9	0.080	0.562	20.261501	-90.085553
Poc Boc	69.00	3	2	7306	4.4	70.6	3.4	3.9	2.1	8.4	1.4	5.1	0.7	75.0	3.4	21.6	0.068	0.562	20.261570	-90.085656
T. Izq. Dzitbalché	76.50	3	1	6417	4.1	72.4	3.8	3.4	1.8	8.1	1.2	4.4	0.8	76.5	3.8	19.7	0.070	0.598	20.309557	-90.053766
T. Izq. Dzitbalché	76.50	3	2	6576	4.5	71.9	4.4	3.1	1.6	8.6	1.4	3.6	0.9	76.4	4.4	19.2	0.079	0.598	20.309669	-90.053798
Calkiní	84.20	3	1	6288	4.6	69.6	3.7	3.4	2.3	8.8	1.6	5.0	1.0	74.2	3.7	22.1	0.073	0.551	20.376341	-90.039153
Calkiní	84.20	3	2	6315	4.9	70.0	3.9	3.2	2.0	8.5	1.4	5.3	0.8	74.9	3.9	21.2	0.068	0.551	20.376342	-90.039243
T. Der a Tepakán	86.60	3	1	5414	3.1	71.2	4.4	3.0	2.3	9.6	1.4	4.2	0.8	74.3	4.4	21.3	0.077	0.627	20.394379	-90.033586
T. Der a Tepakán	86.60	3	2	5157	2.8	68.8	5.2	3.8	3.0	10.0	1.4	4.0	1.0	71.6	5.2	23.2	0.092	0.627	20.394464	-90.033753
Lim. Edos. Term. Camp. Ppia. Yuc.	96.96																			
T. Der. Maxcanú	109.70	1	1	5435	3.4	68.8	5.2	3.2	1.8	10.3	1.7	4.6	1.0	72.2	5.2	22.6	0.077	0.528	20.560866	-89.980205
T. Der. Maxcanú	109.70	1	2	5185	3.2	69.1	5.0	3.1	1.9	10.3	1.8	4.8	0.8	72.3	5.0	22.7	0.086	0.528	20.560931	-89.980336
T. Der. Maxcanú	109.70	3	1	4959	2.6	68.5	4.3	3.6	2.4	10.6	1.7	5.4	0.9	71.1	4.3	24.6	0.078	0.634	20.596003	-89.970581
T. Der. Maxcanú	109.70	3	2	5286	2.8	70.9	3.8	3.1	2.1	10.2	1.5	4.8	0.8	73.7	3.8	22.5	0.086	0.634	20.596765	-89.970603
T. Der. Kopomá (1er Acceso)	119.50	1	1	7298	2.8	76.5	3.0	3.6	2.9	6.2	1.2	3.1	0.7	79.3	3.0	17.7	0.121	0.705	20.637475	-89.918230
T. Der. Kopomá (1er Acceso)	119.50	1	2	6367	2.7	75.5	2.7	3.8	3.3	6.8	1.1	3.3	0.8	78.2	2.7	19.1	0.156	0.705	20.637779	-89.917955

CAMPECHE

1 CARR : Campeche - Mérida

CLAVE: 00066

RUTA: MEX-180

AÑO: 2025

LUGAR	ESTACION				CLASIFICACION VEHICULAR EN PORCIENTO														COORDENADAS	
	KM	TE	SC	TDPA	M	A	B	C2	C3	T3S2	T3S3	T3S2R4	OTROS	A	B	C	K'	D	LATITUD	LONGITUD
T. Der. Kopomá (2do Acceso)	121.50	1	1	6735	3.0	74.9	3.0	3.3	2.6	7.6	1.1	3.6	0.9	77.9	3.0	19.1	0.109	0.649	20.653820	-89.900559
T. Der. Kopomá (2do Acceso)	121.50	1	2	7484	2.8	75.3	3.3	3.5	2.5	7.6	1.0	3.2	0.8	78.1	3.3	18.6	0.121	0.649	20.653937	-89.900600
T. Der. Kopomá (2do Acceso)	121.50	3	1	7310	3.8	75.3	3.6	3.4	2.0	6.8	1.2	3.0	0.9	79.1	3.6	17.3	0.077	0.528	20.663533	-89.889974
T. Der. Kopomá (2do Acceso)	121.50	3	2	7244	3.4	75.0	3.9	3.3	2.2	6.9	1.5	3.1	0.7	78.4	3.9	17.7	0.096	0.528	20.663604	-89.890083
T. Izq. Chocolá (1er Acceso)	133.00	1	1	6665	2.5	76.3	3.6	3.5	1.7	6.6	1.2	3.8	0.8	78.8	3.6	17.6	0.107	0.628	20.726429	-89.842983
T. Izq. Chocolá (1er Acceso)	133.00	1	2	7383	2.9	75.6	3.4	4.0	1.9	6.2	1.5	3.8	0.7	78.5	3.4	18.1	0.091	0.628	20.726503	-89.843096
T. Izq. Chocolá (1er Acceso)	133.00	3	1	7719	4.1	73.5	3.0	4.8	2.0	7.2	1.1	3.5	0.8	77.6	3.0	19.4	0.116	0.622	20.744392	-89.827847
T. Izq. Chocolá (1er Acceso)	133.00	3	2	7579	4.0	74.0	2.9	4.6	2.2	7.1	1.2	3.4	0.6	78.0	2.9	19.1	0.132	0.622	20.744151	-89.828475
T. Izq. Chocolá (2do Acceso)	135.60	3	1	8798	4.6	71.5	3.3	5.8	3.0	6.2	1.3	3.6	0.7	76.1	3.3	20.6	0.080	0.607	20.764897	-89.825031
T. Izq. Chocolá (2do Acceso)	135.60	3	2	8980	4.4	71.9	2.9	5.7	3.2	6.2	1.2	3.8	0.7	76.3	2.9	20.8	0.099	0.607	20.765149	-89.825082
T. Izq. Umán	139.50	3	1	6859	3.6	73.5	3.7	5.2	2.9	5.9	1.2	3.2	0.8	77.1	3.7	19.2	0.101	0.542	20.802174	-89.804937
T. Izq. Umán	139.50	3	2	7184	3.8	70.8	4.0	5.8	3.2	6.0	1.4	4.0	1.0	74.6	4.0	21.4	0.100	0.542	20.802296	-89.805073
X. C. Campeche - Umán	149.00	1	1	7599	2.8	73.1	3.0	6.0	3.2	6.1	1.6	3.4	0.8	75.9	3.0	21.1	0.082	0.610	20.836185	-89.754881
X. C. Campeche - Umán	149.00	1	2	7810	2.9	70.9	3.3	6.3	3.6	6.9	1.6	3.6	0.9	73.8	3.3	22.9	0.092	0.610	20.836408	-89.754805
T. C. Periférico de Mérida	159.00	1	1	9711	4.4	72.5	2.9	3.4	4.1	6.9	2.7	2.5	0.6	76.9	2.9	20.2	0.097	0.506	20.898249	-89.683754
T. C. Periférico de Mérida	159.00	1	2	9659	4.6	71.7	3.1	3.2	4.4	7.0	2.5	2.7	0.8	76.3	3.1	20.6	0.097	0.506	20.898410	-89.683838

2 CARR : Campeche - Tixmucuy

CLAVE: 04575

RUTA: MEX-180

AÑO: 2025

LUGAR	ESTACION				CLASIFICACION VEHICULAR EN PORCIENTO														COORDENADAS	
	KM	TE	SC	TDPA	M	A	B	C2	C3	T3S2	T3S3	T3S2R4	OTROS	A	B	C	K'	D	LATITUD	LONGITUD
Campeche	0.00	3	1	7438	14.4	77.5	1.1	3.6	1.7	0.6	0.7	0.4	0.0	91.9	1.1	7.0	0.093	0.519	19.810456	-90.506101
Campeche	0.00	3	2	7113	14.1	77.7	0.9	3.9	1.9	0.9	0.4	0.2	0.0	91.8	0.9	7.3	0.098	0.519	19.810217	-90.505877
T. Der. Periférico Pablo García y Montilla (Libramiento De Campeche)	4.00	3	1	4355	34.9	60.8	0.5	2.5	0.9	0.3	0.0	0.1	0.0	95.7	0.5	3.8	0.089	0.556	19.785825	-90.499787
T. Der. Periférico Pablo García y Montilla (Libramiento De Campeche)	4.00	3	2	4326	35.6	59.9	0.7	2.1	1.1	0.4	0.0	0.2	0.0	95.5	0.7	3.8	0.097	0.556	19.787771	-90.500007
X. C. Haltunchén - Cayal	39.00	1	0	1543	7.2	80.7	1.6	7.4	1.6	0.9	0.2	0.3	0.1	87.9	1.6	10.5	0.078	0.537	19.605677	-90.319432
Tixmucuy	42.00	1	0	580	18.6	70.6	1.5	7.5	0.8	0.6	0.2	0.2	0.0	89.2	1.5	9.3	0.091	0.566	19.585053	-90.317356

3 CARR : Campeche - Umán

CLAVE: 00164

RUTA: MEX-261

AÑO: 2025

LUGAR	ESTACION				CLASIFICACION VEHICULAR EN PORCIENTO														COORDENADAS	
	KM	TE	SC	TDPA	M	A	B	C2	C3	T3S2	T3S3	T3S2R4	OTROS	A	B	C	K'	D	LATITUD	LONGITUD
Campeche	0.00																			
T. Der. Periférico Pablo García y Montilla (Libramiento De Campeche)	7.85	1	0	5850	12.8	82.1	0.7	2.7	1.0	0.5	0.1	0.1	0.0	94.9	0.7	4.4	0.075	0.633	19.849196	-90.473475
T. Der. Periférico Pablo García y Montilla (Libramiento De Campeche)	7.85	3	0	3395	16.1	77.8	0.8	3.6	0.9	0.5	0.2	0.1	0.0	93.9	0.8	5.3	0.085	0.533	19.848326	-90.452650

CAMPECHE

3 CARR: Campeche - Umán

CLAVE: 00164

RUTA: MEX-261

AÑO: 2025

LUGAR	ESTACION				CLASIFICACION VEHICULAR EN PORCIENTO													COORDENADAS		
	KM	TE	SC	TDPA	M	A	B	C2	C3	T3S2	T3S3	T3S2R4	OTROS	A	B	C	K'	D	LATITUD	LONGITUD
T. Izq. Tenabo	31.00	1	0	1912	12.4	78.3	1.2	5.7	0.7	0.9	0.4	0.3	0.1	90.7	1.2	8.1	0.091	0.546	19.805098	-90.283057
T. Izq. Tenabo	31.00	3	0	2019	11.6	74.3	1.4	9.6	1.3	0.9	0.3	0.5	0.1	85.9	1.4	12.7	0.089	0.522	19.804522	-90.272841
T. Der. Edzna	44.70	1	0	1649	12.5	75.9	1.8	7.3	0.8	1.4	0.2	0.1	0.0	88.4	1.8	9.8	0.093	0.706	19.743636	-90.178363
T. Der. Edzna	44.70	3	0	2106	12.9	78.5	0.9	4.1	1.4	1.0	0.6	0.5	0.1	91.4	0.9	7.7	0.087	0.525	19.745203	-90.170995
Hopelchén	85.38	1	0	3000	12.3	77.0	1.0	6.9	1.0	1.4	0.2	0.2	0.0	89.3	1.0	9.7	0.087	0.548	19.753820	-89.854585
Bolonchén de Rejón	120.00	3	0	1594	21.0	67.7	1.8	4.5	1.4	1.8	0.9	0.8	0.1	88.7	1.8	9.5	0.093	0.568	20.012476	-89.734019
Lim. Edos. Term. Camp. Ppia. Yuc.	126.88																			
T. Der. Sayil	146.80	1	0	658	6.6	78.7	2.4	6.4	2.3	1.3	0.9	1.4	0.0	85.3	2.4	12.3	0.091	0.533	20.208270	-89.670534
Santa Elena	160.00	1	0	1285	26.9	60.7	1.4	5.7	2.2	1.6	0.5	0.9	0.1	87.6	1.4	11.0	0.121	0.548	20.319094	-89.643328
T. Izq. Ruinas de Uxmal	173.70	1	0	828	19.0	70.7	0.8	4.8	1.4	1.9	0.6	0.8	0.0	89.7	0.8	9.5	0.081	0.537	20.361445	-89.762095
Muna	189.00	1	0	1674	19.0	74.5	0.7	2.9	1.0	1.0	0.3	0.5	0.1	93.5	0.7	5.8	0.110	0.707	20.460597	-89.725351
Muna	189.00	3	0	4386	5.4	83.5	1.5	5.6	1.6	1.3	0.6	0.4	0.1	88.9	1.5	9.6	0.095	0.629	20.511464	-89.709208
Xtepén	226.00	1	0	5518	3.4	80.1	1.0	7.9	2.0	2.3	1.5	1.4	0.4	83.5	1.0	15.5	0.089	0.602	20.803580	-89.734160
Umán	233.70	1	0	4841	17.9	66.3	1.2	5.1	3.9	4.0	1.0	0.5	0.1	84.2	1.2	14.6	0.088	0.565	20.866605	-89.746050

4 CARR: Cd. del Carmen - Campeche

CLAVE: 04065

RUTA: MEX-180

AÑO: 2025

LUGAR	ESTACION				CLASIFICACION VEHICULAR EN PORCIENTO													COORDENADAS		
	KM	TE	SC	TDPA	M	A	B	C2	C3	T3S2	T3S3	T3S2R4	OTROS	A	B	C	K'	D	LATITUD	LONGITUD
Cd. del Carmen	0.00	3	1	14837	6.3	80.0	2.2	4.9	1.0	2.9	0.9	1.6	0.2	86.3	2.2	11.5	0.084	0.561	18.658915	-91.775204
Cd. del Carmen	0.00	3	2	13885	6.1	80.2	2.7	4.5	1.6	2.7	0.5	1.3	0.4	86.3	2.7	11.0	0.076	0.561	18.659023	-91.775240
La Palma	26.70	1	0	7201	3.6	69.3	5.1	3.5	1.5	10.1	1.4	4.5	1.0	72.9	5.1	22.0	0.083	0.543	18.730687	-91.641358
Isla Aguada	37.75	3	0	5970	5.1	63.5	5.2	3.8	2.2	11.4	2.2	5.6	1.0	68.6	5.2	26.2	0.076	0.521	18.796944	-91.483663
T. Der. Sabancuy	78.05	3	0	5730	5.1	60.5	6.5	4.3	2.5	12.2	2.6	5.3	1.0	65.6	6.5	27.9	0.067	0.547	18.992304	-91.186776
Champotón	141.80	1	0	6163	9.7	58.8	5.4	3.6	2.5	11.3	2.3	5.4	1.0	68.5	5.4	26.1	0.066	0.519	19.321842	-90.746399
Champotón	141.80	3	1	5011	7.6	67.9	4.0	5.3	1.6	7.3	1.6	3.8	0.9	75.5	4.0	20.5	0.073	0.533	19.375766	-90.721706
Champotón	141.80	3	2	5320	7.7	67.6	4.1	5.5	1.9	6.9	1.8	3.9	0.6	75.3	4.1	20.6	0.070	0.533	19.374915	-90.721787
T. C. Haltunchén - San Antonio Cayal	159.60	1	1	6538	6.7	69.0	4.2	4.4	2.1	7.3	1.5	3.8	1.0	75.7	4.2	20.1	0.092	0.575	19.495125	-90.702782
T. C. Haltunchén - San Antonio Cayal	159.60	1	2	6032	6.9	68.8	4.6	4.2	1.8	7.2	1.6	3.9	1.0	75.7	4.6	19.7	0.075	0.575	19.484952	-90.702707
Haltunchén	161.81																			
T. Der. Libramiento de Seybaplaya (1º Acceso)	175.71	1	0	3081	18.2	77.2	0.2	2.8	1.1	0.3	0.1	0.1	0.0	95.4	0.2	4.4	0.086	0.545	19.622289	-90.685439
T. Der. Libramiento de Seybaplaya (1º Acceso)	175.71	3	1	709	22.7	70.5	0.6	4.4	0.8	0.3	0.2	0.3	0.2	93.2	0.6	6.2	0.107	0.549	19.626067	-90.685166
T. Der. Libramiento de Seybaplaya (1º Acceso)	175.71	3	2	703	22.4	71.2	0.4	4.7	0.5	0.3	0.2	0.2	0.1	93.6	0.4	6.0	0.104	0.549	19.626078	-90.685245
T. Der. Libramiento de Seybaplaya (2do. Acceso)	179.00	3	0	2610	9.8	78.9	1.7	4.7	2.2	1.5	0.5	0.6	0.1	88.7	1.7	9.6	0.092	0.647	19.656577	-90.686997
T. Der. Periférico Pablo García y Montilla (Libramiento De Campeche)	195.70	1	0	2930	14.5	79.2	1.6	2.7	1.2	0.4	0.2	0.1	0.1	93.7	1.6	4.7	0.098	0.556	19.786643	-90.625420

CAMPECHE

4 CARR: Cd. del Carmen - Campeche

CLAVE: 04065

RUTA: MEX-180

AÑO: 2025

LUGAR	ESTACION				CLASIFICACION VEHICULAR EN PORCIENTO													COORDENADAS		
	KM	TE	SC	TDPA	M	A	B	C2	C3	T3S2	T3S3	T3S2R4	OTROS	A	B	C	K'	D	LATITUD	LONGITUD
Lerma	199.51	1	1	885	19.0	74.9	1.5	2.3	1.1	0.4	0.3	0.5	0.0	93.9	1.5	4.6	0.101	0.511	19.792058	-90.618988
Lerma	199.51	1	2	903	19.0	75.0	1.5	2.3	1.5	0.3	0.2	0.2	0.0	94.0	1.5	4.5	0.086	0.511	19.792125	-90.619064
Campeche	203.18																			

5 CARR: Chencoyi - Tenabo

CLAVE: 04576

RUTA: MEX-180

AÑO: 2025

LUGAR	ESTACION				CLASIFICACION VEHICULAR EN PORCIENTO													COORDENADAS		
	KM	TE	SC	TDPA	M	A	B	C2	C3	T3S2	T3S3	T3S2R4	OTROS	A	B	C	K'	D	LATITUD	LONGITUD
T. C. Campeche - Umán	0.00																			
Tenabo	28.00	1	0	1247	17.3	72.4	1.1	4.2	2.3	1.2	0.9	0.4	0.2	89.7	1.1	9.2	0.089	0.505	20.026138	-90.226675

6 CARR: Dzitbalché - Ent. San Bernardo

CLAVE: 00162

RUTA: MEX-180

AÑO: 2025

LUGAR	ESTACION				CLASIFICACION VEHICULAR EN PORCIENTO													COORDENADAS		
	KM	TE	SC	TDPA	M	A	B	C2	C3	T3S2	T3S3	T3S2R4	OTROS	A	B	C	K'	D	LATITUD	LONGITUD
T. C. Campeche - Mérida	0.00																			
T. Izq. Libramiento de Becal (1° Acceso)	12.33	1	0	4523	24.3	69.4	1.6	3.1	0.9	0.4	0.2	0.1	0.0	93.7	1.6	4.7	0.081	0.622	20.418441	-90.034131
T. Izq. Libramiento de Becal (2° Acceso)	15.41	3	0	2191	16.6	76.6	1.2	3.5	0.7	1.0	0.4	0.0	0.0	93.2	1.2	5.6	0.084	0.524	20.449584	-90.038845
Lim. Edos. Term. Camp. Ppia. Yuc.	15.80																			
Halachó	21.08	1	0	2312	23.5	64.9	3.1	6.5	1.0	0.9	0.1	0.0	0.0	88.4	3.1	8.5	0.079	0.500	20.469190	-90.066382
T. Izq. Libramiento de Maxcanú (1° Acceso)	35.60	1	0	3243	26.3	64.0	2.3	5.0	1.1	1.1	0.2	0.0	0.0	90.3	2.3	7.4	0.096	0.700	20.577469	-90.034682
T. Der. Muna	40.36	3	0	4108	8.8	81.2	2.5	5.4	1.0	0.9	0.2	0.0	0.0	90.0	2.5	7.5	0.107	0.780	20.601922	-89.975258
Ent. San Bernardo	41.53																			

7 CARR: Francisco Escárcega - Champotón

CLAVE: 04103

RUTA: MEX-261

AÑO: 2025

LUGAR	ESTACION				CLASIFICACION VEHICULAR EN PORCIENTO													COORDENADAS		
	KM	TE	SC	TDPA	M	A	B	C2	C3	T3S2	T3S3	T3S2R4	OTROS	A	B	C	K'	D	LATITUD	LONGITUD
Francisco Escárcega	0.00	3	0	7265	15.3	65.0	2.3	3.5	2.3	5.6	1.4	3.6	1.0	80.3	2.3	17.4	0.086	0.560	18.621825	-90.742110
T. Izq. Ley Federal de La Reforma Agraria	51.40	1	0	4003	5.4	72.3	3.0	3.6	2.1	6.0	2.2	4.4	1.0	77.7	3.0	19.3	0.085	0.509	19.051323	-90.725064
T. Der. Ulumal y Patzajol	77.00	1	0	4339	5.4	72.9	3.0	3.5	1.9	6.2	2.3	3.9	0.9	78.3	3.0	18.7	0.080	0.529	19.294753	-90.732239
Champotón	81.40	1	0	7097	7.7	76.7	2.2	3.0	1.6	3.8	1.4	2.8	0.8	84.4	2.2	13.4	0.078	0.539	19.317436	-90.729118

CAMPECHE

8 CARR: Francisco Escárcega - Chetumal

CLAVE: 00093

RUTA: MEX-186-307

AÑO: 2025

LUGAR	ESTACION				CLASIFICACION VEHICULAR EN PORCIENTO													COORDENADAS		
	KM	TE	SC	TDPA	M	A	B	C2	C3	T3S2	T3S3	T3S2R4	OTROS	A	B	C	K'	D	LATITUD	LONGITUD
Francisco Escárcega	0.00	3	0	4899	16.4	62.5	4.0	3.6	1.9	5.7	1.5	3.5	0.9	78.9	4.0	17.1	0.074	0.539	18.604133	-90.718114
Adolfo López Mateos	41.50	1	0	3389	8.5	67.1	5.0	3.9	2.1	5.6	1.8	5.1	0.9	75.6	5.0	19.4	0.072	0.547	18.642310	-90.314937
T. Der. Silvituc	55.70	1	0	3349	10.9	67.0	4.7	3.5	2.1	5.1	1.8	4.1	0.8	77.9	4.7	17.4	0.075	0.508	18.651245	-90.276044
T. Der. Silvituc	55.70	3	0	3104	10.0	66.6	5.0	3.8	2.1	6.1	1.7	4.2	0.5	76.6	5.0	18.4	0.061	0.516	18.649497	-90.261985
Conhuás	100.00	1	0	2861	11.3	59.0	5.4	4.9	3.2	6.4	3.3	5.7	0.8	70.3	5.4	24.3	0.058	0.612	18.541254	-89.931518
Xpujil	155.73	1	0	3517	8.6	66.1	4.6	3.9	2.4	5.9	1.8	5.8	0.9	74.7	4.6	20.7	0.081	0.650	18.509271	-89.409054
Lim. Edos. Term. Camp. Ppia. Oroo.	179.90																			
X. C. Caobas - Chacanbacab	186.00	3	0	4198	6.5	50.7	7.2	5.0	9.5	8.4	5.8	6.0	0.9	57.2	7.2	35.6	0.078	0.565	18.468405	-89.093005
Nicolás Bravo	206.01	1	0	3967	7.9	65.0	5.3	5.1	2.1	7.3	2.4	4.5	0.4	72.9	5.3	21.8	0.060	0.525	18.458542	-88.939073
Nicolás Bravo	206.01	3	0	4489	7.3	69.6	4.9	4.0	1.7	5.3	1.5	4.8	0.9	76.9	4.9	18.2	0.073	0.537	18.459105	-88.920160
T. Izq. Morocoy	214.90	1	0	3766	7.7	67.7	5.5	4.2	2.2	6.1	1.9	3.9	0.8	75.4	5.5	19.1	0.101	0.639	18.478808	-88.817220
T. Izq. Morocoy	214.90	3	0	3943	6.1	67.7	4.6	4.2	2.1	7.5	2.7	4.2	0.9	73.8	4.6	21.6	0.072	0.625	18.478868	-88.815752
T. Der. Unión	247.50	1	0	6201	7.6	67.9	5.5	4.2	1.6	7.0	1.9	3.4	0.9	75.5	5.5	19.0	0.087	0.565	18.504274	-88.532220
T. Der. Unión	247.50	3	0	10405	9.4	75.8	1.7	4.9	1.3	3.0	0.9	2.3	0.7	85.2	1.7	13.1	0.070	0.558	18.508701	-88.504628
T. Izq. Fpe. Carrillo Puerto	255.15	1	0	10118	6.7	80.0	2.6	2.3	2.9	2.7	0.7	1.5	0.6	86.7	2.6	10.7	0.063	0.532	18.523827	-88.473455
T. Der. Subteniente López	268.57	1	1	11568	4.4	89.9	1.2	2.4	0.9	0.5	0.2	0.3	0.2	94.3	1.2	4.5	0.076	0.526	18.516650	-88.378007
T. Der. Subteniente López	268.57	1	2	10662	4.3	90.0	1.2	2.4	0.9	0.5	0.2	0.3	0.2	94.3	1.2	4.5	0.077	0.526	18.516727	-88.377867
T. Izq. Av. Insurgentes	270.00	1	1	17754	9.9	81.9	1.3	3.9	1.3	0.8	0.2	0.5	0.2	91.8	1.3	6.9	0.085	0.525	18.513270	-88.362844
T. Izq. Av. Insurgentes	270.00	1	2	15113	9.8	82.4	1.5	3.7	1.4	0.8	0.1	0.2	0.1	92.2	1.5	6.3	0.081	0.525	18.513108	-88.361522
T. Izq. Av. Insurgentes	270.00	3	1	5050	5.7	88.4	0.8	2.3	1.0	0.7	0.6	0.4	0.1	94.1	0.8	5.1	0.080	0.503	18.508522	-88.348146
T. Izq. Av. Insurgentes	270.00	3	2	5810	5.4	89.1	1.0	2.1	0.9	0.6	0.5	0.3	0.1	94.5	1.0	4.5	0.083	0.503	18.508620	-88.348121
Chetumal	277.36	1	1	8641	7.9	88.1	0.4	2.1	0.6	0.2	0.3	0.2	0.2	96.0	0.4	3.6	0.098	0.536	18.501960	-88.322222
Chetumal	277.36	1	2	7865	7.9	87.9	0.4	2.1	0.6	0.3	0.4	0.2	0.2	95.8	0.4	3.8	0.104	0.536	18.502081	-88.322253

9 CARR: Haltunchén - San Antonio Cayal

CLAVE: 04009

RUTA: MEX-180

AÑO: 2025

LUGAR	ESTACION				CLASIFICACION VEHICULAR EN PORCIENTO													COORDENADAS		
	KM	TE	SC	TDPA	M	A	B	C2	C3	T3S2	T3S3	T3S2R4	OTROS	A	B	C	K'	D	LATITUD	LONGITUD
T. C. Cd. del Carmen - Campeche	0.00	3	0	1747	17.9	67.8	1.6	5.6	2.8	2.5	0.6	1.0	0.2	85.7	1.6	12.7	0.082	0.503	19.499086	-90.700044
Sihochac	14.00	3	0	1280	22.9	66.0	0.7	5.0	1.3	2.8	0.7	0.4	0.2	88.9	0.7	10.4	0.081	0.567	19.502376	-90.570183
X. C. China - Tixmucuy	47.10	1	0	711	8.6	74.5	1.4	8.2	2.2	2.3	1.2	1.3	0.3	83.1	1.4	15.5	0.087	0.516	19.603448	-90.321011
Edzna	59.00	1	0	1744	8.3	76.1	1.8	8.1	2.6	1.7	0.8	0.5	0.1	84.4	1.8	13.8	0.091	0.591	19.604220	-90.227176
T. Der. Pichucalco	60.00	3	0	677	21.0	67.2	0.6	6.3	1.6	1.2	0.7	1.1	0.3	88.2	0.6	11.2	0.118	0.513	19.608454	-90.220829
San Antonio Cayal	79.00	1	0	471	22.7	60.1	2.1	7.8	2.0	2.4	0.8	1.8	0.3	82.8	2.1	15.1	0.138	0.769	19.739650	-90.174253

CAMPECHE

10 CARR: Periférico Pablo García y Montilla (Libramiento de Campeche)

CLAVE: 04573

RUTA: MEX-202

AÑO: 2025

LUGAR	ESTACION				CLASIFICACION VEHICULAR EN PORCIENTO										COORDENADAS					
	KM	TE	SC	TDPA	M	A	B	C2	C3	T3S2	T3S3	T3S2R4	OTROS	A	B	C	K'	D	LATITUD	LONGITUD
Ent. Lerma	0.00	3	1	2899	10.8	84.3	0.7	1.5	1.0	0.9	0.4	0.4	0.0	95.1	0.7	4.2	0.134	0.657	19.797816	-90.587777
Ent. Lerma	0.00	3	2	3201	10.5	84.1	0.9	1.6	1.2	0.9	0.3	0.5	0.0	94.6	0.9	4.5	0.167	0.657	19.797925	-90.587765
T. Izq. Av. Escenica	5.00	3	1	2910	10.1	79.7	1.6	3.7	1.7	1.4	0.7	0.8	0.3	89.8	1.6	8.6	0.124	0.515	19.799029	-90.567645
T. Izq. Av. Escenica	5.00	3	2	2987	9.9	81.4	1.4	3.5	1.6	1.0	0.4	0.6	0.2	91.3	1.4	7.3	0.132	0.515	19.799138	-90.567597
X. C. Champotón - Campeche (Cuota)	10.00	3	1	8192	7.8	72.1	2.7	3.7	2.1	6.4	1.4	3.3	0.5	79.9	2.7	17.4	0.077	0.736	19.796881	-90.518561
X. C. Champotón - Campeche (Cuota)	10.00	3	2	9372	7.6	71.6	3.0	3.3	2.8	6.2	1.7	2.8	1.0	79.2	3.0	17.8	0.106	0.736	19.796971	-90.518451
X. C. Campeche - Umán	21.00	1	1	6680	4.3	73.8	3.1	5.0	2.2	5.7	1.1	4.2	0.6	78.1	3.1	18.8	0.079	0.582	19.843341	-90.471038
X. C. Campeche - Umán	21.00	1	2	6232	4.2	72.5	3.2	5.3	2.4	6.2	1.3	4.2	0.7	76.7	3.2	20.1	0.070	0.582	19.843388	-90.471147
T. C. Campeche - Mérida	26.00	1	1	6628	4.2	69.7	3.7	6.5	2.8	6.9	1.2	4.1	0.9	73.9	3.7	22.4	0.065	0.616	19.881531	-90.462184
T. C. Campeche - Mérida	26.00	1	2	7064	4.8	68.1	3.5	6.3	3.1	7.7	1.8	3.9	0.8	72.9	3.5	23.6	0.082	0.616	19.881463	-90.462294

11 CARR: Presidente Díaz Ordaz - Sabancuy

CLAVE: 04570

RUTA: MEX-186

AÑO: 2025

LUGAR	ESTACION				CLASIFICACION VEHICULAR EN PORCIENTO										COORDENADAS					
	KM	TE	SC	TDPA	M	A	B	C2	C3	T3S2	T3S3	T3S2R4	OTROS	A	B	C	K'	D	LATITUD	LONGITUD
T. C. Villahermosa - Francisco Escárcega	0.00	3	0	1486	15.0	75.1	2.2	3.5	1.5	0.7	0.7	1.3	0.0	90.1	2.2	7.7	0.083	0.512	18.630848	-90.982867
Chicbul	18.00	1	0	1774	19.9	67.0	2.7	4.6	1.8	2.1	0.6	1.3	0.0	86.9	2.7	10.4	0.077	0.569	18.768625	-90.933337
T. C. Cd. del Carmen - Campeche	57.00	1	0	1906	12.2	76.5	3.8	3.0	1.5	1.4	0.5	0.7	0.4	88.7	3.8	7.5	0.100	0.529	18.987637	-91.188533

12 CARR: Ramal a Nuevo Coahuila

CLAVE: 04015

RUTA: MEX-186

AÑO: 2025

LUGAR	ESTACION				CLASIFICACION VEHICULAR EN PORCIENTO										COORDENADAS					
	KM	TE	SC	TDPA	M	A	B	C2	C3	T3S2	T3S3	T3S2R4	OTROS	A	B	C	K'	D	LATITUD	LONGITUD
T. C. Villahermosa - Francisco Escárcega	0.00	3	0	1264	8.9	79.5	2.2	4.4	1.6	1.7	0.7	0.8	0.2	88.4	2.2	9.4	0.086	0.523	18.377499	-91.196086
Candelaria	28.00	3	0	3540	5.7	87.6	1.5	2.3	1.3	0.7	0.5	0.2	0.2	93.3	1.5	5.2	0.085	0.627	18.174493	-91.053548
Reforma	44.50	3	0	1597	4.4	91.8	0.6	1.7	0.8	0.1	0.4	0.2	0.0	96.2	0.6	3.2	0.090	0.632	18.074138	-91.026116
T. Izq. Pedro Baranda	54.80	1	0	862	15.6	81.0	0.6	1.3	0.7	0.3	0.1	0.3	0.1	96.6	0.6	2.8	0.106	0.648	17.968864	-90.906313
T. Izq. Pedro Baranda	54.80	3	0	841	14.6	81.9	0.7	1.2	0.5	0.5	0.2	0.3	0.1	96.5	0.7	2.8	0.106	0.640	17.967404	-90.904749
Nuevo Coahuila	70.00	1	0	961	17.2	79.3	0.7	1.3	0.7	0.3	0.1	0.3	0.1	96.5	0.7	2.8	0.092	0.511	17.892127	-90.780330

13 CARR: Ramal a Ruíz Cortines

CLAVE: 04101

RUTA: MEX-180

AÑO: 2025

LUGAR	ESTACION				CLASIFICACION VEHICULAR EN PORCIENTO										COORDENADAS				
	KM	TE	SC	TDPA	M	A	B	C2	C3	T3S2	T3S3	T3S2R4	OTROS	A	B	C	K'	D	LATITUD

Hool 0.00

CAMPECHE

13 CARR: Ramal a Ruíz Cortines

CLAVE: 04101

RUTA: MEX-180

AÑO: 2025

LUGAR	ESTACION				CLASIFICACION VEHICULAR EN PORCIENTO														COORDENADAS	
	KM	TE	SC	TDPA	M	A	B	C2	C3	T3S2	T3S3	T3S2R4	OTROS	A	B	C	K'	D	LATITUD	LONGITUD
T. Der. Hool	1.00	3	0	352	39.1	51.9	0.9	3.2	3.9	0.4	0.3	0.2	0.1	91.0	0.9	8.1	0.105	0.541	19.512265	-90.439810
Ruíz Cortines	12.00																			

14 CARR: San Marcos - Palizada

CLAVE: 00490

RUTA: MEX-186

AÑO: 2025

LUGAR	ESTACION				CLASIFICACION VEHICULAR EN PORCIENTO														COORDENADAS	
	KM	TE	SC	TDPA	M	A	B	C2	C3	T3S2	T3S3	T3S2R4	OTROS	A	B	C	K'	D	LATITUD	LONGITUD
T. C. Villahermosa - Francisco Escárcega	0.00	3	0	1041	11.7	74.6	1.4	7.7	3.0	1.3	0.3	0.0	0.0	86.3	1.4	12.3	0.166	0.590	17.942374	-91.735150
Lim. Edos. Term. Tab. Ppia. Camp.	1.50																			
T. Izq. Jonuta	46.20	1	0	751	6.1	80.3	0.9	10.1	1.8	0.5	0.2	0.1	0.0	86.4	0.9	12.7	0.092	0.609	18.126074	-92.106727
T. Izq. Jonuta	46.20	3	0	870	10.5	80.3	1.2	4.7	2.9	0.4	0.0	0.0	0.0	90.8	1.2	8.0	0.103	0.511	18.130594	-92.113366
Palizada	68.00																			

15 CARR: Villahermosa - Cd. del Carmen

CLAVE: 00064

RUTA: MEX-180

AÑO: 2025

LUGAR	ESTACION				CLASIFICACION VEHICULAR EN PORCIENTO														COORDENADAS	
	KM	TE	SC	TDPA	M	A	B	C2	C3	T3S2	T3S3	T3S2R4	OTROS	A	B	C	K'	D	LATITUD	LONGITUD
Villahermosa	0.00																			
T. Izq. Cd. Industrial	4.30	3	1	32142	6.5	87.7	0.8	1.3	1.5	0.7	0.3	0.9	0.3	94.2	0.8	5.0	0.082	0.571	18.037223	-92.901484
T. Izq. Cd. Industrial	4.30	3	2	31596	6.1	88.7	0.9	1.5	1.1	0.6	0.1	0.8	0.2	94.8	0.9	4.3	0.098	0.571	18.036556	-92.901679
X. C. Libramiento de Villahermosa	8.10	3	1	23572	5.5	87.2	1.3	1.7	0.8	1.9	0.5	0.8	0.3	92.7	1.3	6.0	0.085	0.644	18.062948	-92.882166
X. C. Libramiento de Villahermosa	8.10	3	2	26281	5.4	86.7	1.3	2.0	1.2	1.8	0.4	1.0	0.2	92.1	1.3	6.6	0.106	0.644	18.063012	-92.882213
Macultepec	18.60	1	1	19328	7.7	79.3	1.7	3.4	1.5	3.6	0.9	1.4	0.5	87.0	1.7	11.3	0.069	0.516	18.141596	-92.864651
Macultepec	18.60	1	2	19444	8.1	79.4	1.7	2.8	1.5	3.6	1.0	1.4	0.5	87.5	1.7	10.8	0.075	0.516	18.141611	-92.864736
Macultepec	18.60	3	1	6716	3.7	74.3	4.2	5.9	1.6	5.8	1.4	2.5	0.6	78.0	4.2	17.8	0.077	0.529	18.167374	-92.858479
Macultepec	18.60	3	2	6628	3.7	74.7	4.1	6.0	1.5	5.9	1.0	2.4	0.7	78.4	4.1	17.5	0.078	0.529	18.167375	-92.858517
El Espino	33.20	1	0	10845	2.0	70.6	4.1	6.0	2.4	8.5	2.1	3.5	0.8	72.6	4.1	23.3	0.074	0.559	18.205937	-92.822772
El Espino	33.20	3	0	9990	3.5	69.8	4.4	5.2	2.4	8.2	1.9	3.4	1.2	73.3	4.4	22.3	0.070	0.521	18.256728	-92.831691
T. Izq. Simon Sarlat	45.00	3	0	10294	4.3	73.4	3.8	3.4	1.8	8.2	1.1	3.2	0.8	77.7	3.8	18.5	0.073	0.582	18.349722	-92.789805
T. Izq. El Bellote	49.67	3	0	9936	5.6	67.9	4.3	6.2	1.7	8.5	1.3	3.5	1.0	73.5	4.3	22.2	0.071	0.545	18.394191	-92.798049
T. Izq. Constanca y Venecia	56.10	3	0	10673	7.4	68.0	4.2	5.5	1.5	8.0	1.2	3.3	0.9	75.4	4.2	20.4	0.074	0.535	18.444456	-92.794464
Frontera	74.59	1	0	11539	8.6	69.3	3.1	3.5	2.4	7.6	1.5	3.2	0.8	77.9	3.1	19.0	0.070	0.565	18.512435	-92.649445
Frontera	74.59	3	0	7733	7.7	61.6	5.4	5.0	2.7	9.9	2.1	4.7	0.9	69.3	5.4	25.3	0.065	0.522	18.542329	-92.631797
T. Izq. Escolleras	78.00	3	0	7239	5.8	64.3	6.0	5.4	1.8	9.2	2.2	4.3	1.0	70.1	6.0	23.9	0.065	0.544	18.562275	-92.601545
Puente San Pedro	96.50	3	0	6327	4.1	64.5	6.0	6.3	2.4	9.6	2.4	4.1	0.6	68.6	6.0	25.4	0.062	0.522	18.641252	-92.464243

CAMPECHE

15 CARR: Villahermosa - Cd. del Carmen

CLAVE: 00064

RUTA: MEX-180

AÑO: 2025

LUGAR	ESTACION				CLASIFICACION VEHICULAR EN PORCIENTO										COORDENADAS					
	KM	TE	SC	TDPA	M	A	B	C2	C3	T3S2	T3S3	T3S2R4	OTROS	A	B	C	K'	D	LATITUD	LONGITUD
Lim. Edos. Term. Tab. Ppia. Camp.	99.75																			
Nuevo Campechito	100.00	3	0	6106	3.5	63.0	6.0	6.8	2.0	11.2	2.2	4.8	0.5	66.5	6.0	27.5	0.084	0.505	18.643158	-92.454237
Nuevo Progreso	113.60	1	0	8023	4.3	63.5	4.8	6.2	1.9	11.6	2.3	4.7	0.7	67.8	4.8	27.4	0.065	0.549	18.627053	-92.330123
Nuevo Progreso (2do Acceso)	119.00	1	0	6061	4.3	61.5	4.4	6.5	3.2	12.3	2.3	5.1	0.4	65.8	4.4	29.8	0.080	0.530	18.616709	-92.288474
T. Der. San Antonio Cárdenas (1er Acceso)	121.80	1	0	6957	8.9	59.7	6.4	4.5	2.8	10.5	2.3	4.0	0.9	68.6	6.4	25.0	0.075	0.506	18.618814	-92.247895
T. Der. San Antonio Cárdenas (2do Acceso)	125.20	1	0	7406	4.4	62.3	7.0	4.6	2.2	12.4	2.4	4.2	0.5	66.7	7.0	26.3	0.063	0.501	18.622208	-92.227732
T. Der. San Antonio Cárdenas (2do Acceso)	125.20	3	0	8731	7.2	62.8	5.6	3.9	2.4	11.4	1.9	4.4	0.4	70.0	5.6	24.4	0.059	0.523	18.616829	-92.202319
Puente Zacatal	162.41	1	0	7042	4.5	63.8	5.7	4.5	2.4	11.5	2.3	4.8	0.5	68.3	5.7	26.0	0.065	0.574	18.615205	-91.869790
Puente Zacatal	162.41	2	0	6126	0.9	69.7	3.3	4.4	3.1	10.8	1.5	5.6	0.7	70.6	3.3	26.1	0.077	0.500	18.641814	-92.460301
Cd. del Carmen	167.50																			

16 CARR: Villahermosa - Francisco Escárcega

CLAVE: 00092

RUTA: MEX-186-307

AÑO: 2025

LUGAR	ESTACION				CLASIFICACION VEHICULAR EN PORCIENTO										COORDENADAS					
	KM	TE	SC	TDPA	M	A	B	C2	C3	T3S2	T3S3	T3S2R4	OTROS	A	B	C	K'	D	LATITUD	LONGITUD
Villahermosa	0.00	3	1	16682	3.7	84.5	0.8	6.0	0.5	2.4	0.4	1.4	0.3	88.2	0.8	11.0	0.079	0.515	18.001034	-92.890710
Villahermosa	0.00	3	2	16228	4.1	84.1	1.0	5.7	0.8	2.0	0.9	1.2	0.2	88.2	1.0	10.8	0.077	0.515	18.001136	-92.890710
T. C. Libramiento de Villahermosa (Cuota)	3.77																			
T. Izq. Aeropuerto (Alta)	12.00	1	1	17749	5.8	78.8	2.3	5.3	1.4	3.0	1.2	1.6	0.6	84.6	2.3	13.1	0.068	0.547	17.985027	-92.829609
T. Izq. Aeropuerto (Baja)	12.00	1	1	2202	16.8	69.1	1.9	5.5	2.0	1.3	1.1	1.5	0.8	85.9	1.9	12.2	0.105	0.547	17.984972	-92.829643
T. Izq. Aeropuerto (Alta)	12.00	1	2	17226	6.3	77.2	1.9	5.9	1.5	3.1	1.4	2.0	0.7	83.5	1.9	14.6	0.073	0.547	17.985088	-92.829539
T. Izq. Aeropuerto (Baja)	12.00	1	2	2441	16.7	68.2	2.0	6.1	2.0	1.3	1.3	1.6	0.8	84.9	2.0	13.1	0.071	0.547	17.985151	-92.829486
Puente Grijalva	17.60	2	1	8370	4.7	78.2	2.5	3.3	2.0	4.6	1.5	2.8	0.4	82.9	2.5	14.6	0.079	0.500	17.947602	-92.785235
Puente Grijalva	17.60	2	2	8370	4.7	78.2	2.5	3.3	2.0	4.6	1.5	2.8	0.4	82.9	2.5	14.6	0.079	0.500	17.947602	-92.785235
X. C. Cacaos - La Granja	32.46	1	1	7032	3.6	77.6	2.8	3.4	2.1	4.9	2.5	2.4	0.7	81.2	2.8	16.0	0.080	0.511	17.832798	-92.719573
X. C. Cacaos - La Granja	32.46	1	2	7557	3.5	77.4	3.1	3.4	2.0	4.8	2.6	2.6	0.6	80.9	3.1	16.0	0.077	0.511	17.832829	-92.719493
X. C. Cacaos - La Granja	32.46	3	1	6534	3.8	74.2	3.4	4.7	1.8	5.0	2.0	4.1	1.0	78.0	3.4	18.6	0.066	0.540	17.817687	-92.711025
X. C. Cacaos - La Granja	32.46	3	2	6246	4.0	74.4	3.4	4.2	2.1	5.0	2.1	3.9	0.9	78.4	3.4	18.2	0.077	0.540	17.817733	-92.710943
X. C. Jalapa - Jonuta	40.00	3	1	6352	3.5	73.6	3.9	5.2	2.0	5.6	2.0	3.4	0.8	77.1	3.9	19.0	0.077	0.528	17.773632	-92.672112
X. C. Jalapa - Jonuta	40.00	3	2	6150	2.9	74.2	3.5	5.1	2.0	5.5	2.2	3.7	0.9	77.1	3.5	19.4	0.078	0.528	17.773705	-92.672039
T. Izq. Macuspana	46.20	1	1	7422	4.0	75.9	2.4	3.5	2.9	5.1	1.9	3.4	0.9	79.9	2.4	17.7	0.070	0.551	17.744222	-92.634273
T. Izq. Macuspana	46.20	1	2	6895	3.8	76.9	2.1	3.4	3.3	4.9	1.6	3.1	0.9	80.7	2.1	17.2	0.075	0.551	17.744298	-92.634219
T. Izq. Macuspana	46.20	3	1	6636	4.6	75.7	2.5	4.0	2.9	5.1	2.1	2.6	0.5	80.3	2.5	17.2	0.096	0.608	17.731817	-92.618416
T. Izq. Macuspana	46.20	3	2	6992	4.4	74.4	2.2	4.1	3.4	5.2	2.3	3.3	0.7	78.8	2.2	19.0	0.079	0.608	17.731880	-92.618356
X. C. Estación Macuspana - Vernet	54.30	1	0	11541	7.2	70.4	2.2	3.7	3.3	6.1	2.2	3.9	1.0	77.6	2.2	20.2	0.068	0.539	17.712830	-92.583689

CAMPECHE

16 CARR: Villahermosa - Francisco Escárcega

CLAVE: 00092

RUTA: MEX-186-307

AÑO: 2025

LUGAR	ESTACION				CLASIFICACION VEHICULAR EN PORCIENTO										COORDENADAS					
	KM	TE	SC	TDPA	M	A	B	C2	C3	T3S2	T3S3	T3S2R4	OTROS	A	B	C	K'	D	LATITUD	LONGITUD
T. Der. Chivalito (Est. Pino Suárez)	70.00	1	0	12565	7.2	66.4	4.4	5.8	2.2	6.8	2.5	3.8	0.9	73.6	4.4	22.0	0.067	0.548	17.670571	-92.446610
T. Der. Chivalito (Est. Pino Suárez)	70.00	3	1	4716	5.7	70.5	3.1	3.7	2.4	7.3	2.0	4.5	0.8	76.2	3.1	20.7	0.083	0.729	17.666372	-92.424324
T. Der. Chivalito (Est. Pino Suárez)	70.00	3	2	4500	5.4	68.2	3.4	3.9	2.7	8.2	2.2	5.2	0.8	73.6	3.4	23.0	0.115	0.729	17.666206	-92.432461
T. Der. Estación Zopo	71.00	1	0	9495	5.9	66.3	4.4	4.7	2.6	8.0	2.9	4.6	0.6	72.2	4.4	23.4	0.074	0.617	17.672181	-92.415404
T. Der. Estación Zopo	71.00	3	1	4936	5.7	65.8	4.1	4.3	2.9	8.2	3.1	5.0	0.9	71.5	4.1	24.4	0.083	0.515	17.682236	-92.399853
T. Der. Estación Zopo	71.00	3	2	4702	5.5	65.3	4.2	4.4	2.7	8.4	3.3	5.4	0.8	70.8	4.2	25.0	0.093	0.515	17.682265	-92.399877
Lim. Edos. Term. Tab. Ppia. Chis.	76.90																			
T. Izq. Bonanza	88.00	1	0	9272	6.5	64.5	3.3	7.2	2.7	8.1	2.2	4.8	0.7	71.0	3.3	25.7	0.067	0.589	17.698113	-92.268841
T. Izq. Jonuta	101.00	1	0	8736	2.2	69.6	3.0	7.9	2.7	6.9	2.5	4.5	0.7	71.8	3.0	25.2	0.072	0.521	17.698148	-92.145108
T. Izq. Jonuta	101.00	3	0	8209	7.1	64.0	3.3	7.2	2.8	7.4	2.5	5.2	0.5	71.1	3.3	25.6	0.069	0.567	17.697744	-92.128640
X. C. Catazajá - Palenque	114.00	1	0	10345	6.9	65.4	3.2	6.6	2.5	7.9	1.9	5.1	0.5	72.3	3.2	24.5	0.062	0.521	17.707138	-92.026121
X. C. Catazajá - Palenque	114.00	3	0	9170	5.5	66.6	3.1	6.7	2.8	7.7	2.4	4.5	0.7	72.1	3.1	24.8	0.066	0.558	17.722880	-91.976434
T. Der. Emiliano Zapata	134.70	1	0	6771	6.5	64.4	4.7	4.1	3.1	8.5	2.1	5.9	0.7	70.9	4.7	24.4	0.069	0.572	17.770550	-91.837622
T. Der. Emiliano Zapata	134.70	3	0	5087	5.9	65.8	4.8	4.3	3.0	7.7	2.1	5.7	0.7	71.7	4.8	23.5	0.076	0.576	17.785075	-91.822203
Lim. Edos. Term. Chis. Ppia. Tab.	140.70																			
Puente Usumacinta	145.20	2	0	4949	9.1	56.9	3.4	3.5	4.0	12.0	2.3	7.9	0.9	66.0	3.4	30.6	0.079	0.500	17.859905	-91.783654
T. Izq. Palizada	154.05	1	0	4766	7.9	62.0	4.3	2.8	3.0	7.8	2.8	8.7	0.7	69.9	4.3	25.8	0.068	0.634	17.937827	-91.737210
T. Izq. Palizada	154.05	3	0	3704	6.0	55.9	5.9	3.3	3.2	12.9	2.9	9.1	0.8	61.9	5.9	32.2	0.069	0.591	17.945839	-91.730423
Lim. Edos. Term. Tab. Ppia. Camp.	154.60																			
T. Der. Candelaria	233.40	1	0	4152	4.9	56.5	6.4	5.4	2.3	12.2	2.6	8.9	0.8	61.4	6.4	32.2	0.066	0.533	18.370512	-91.203355
T. Der. Felipe Ángeles	253.00	1	0	4761	3.6	61.0	6.0	5.1	2.3	11.6	2.8	6.7	0.9	64.6	6.0	29.4	0.067	0.517	18.504068	-91.106418
T. Izq. Sabancuy	274.10	1	0	5913	6.9	60.4	5.0	5.7	2.5	9.3	2.1	7.1	1.0	67.3	5.0	27.7	0.069	0.501	18.629655	-90.988511
Francisco Escárcega	297.04	1	0	9673	14.5	66.2	2.4	2.8	2.3	6.2	1.4	3.4	0.8	80.7	2.4	16.9	0.072	0.541	18.610039	-90.776466

17 CARR: Champotón - Campeche (Cuota)

CLAVE: 04014

RUTA: MEX-180D

AÑO: 2025

LUGAR	ESTACION				CLASIFICACION VEHICULAR EN PORCIENTO										COORDENADAS					
	KM	TE	SC	TDPA	M	A	B	C2	C3	T3S2	T3S3	T3S2R4	OTROS	A	B	C	K'	D	LATITUD	LONGITUD
T. C. Cd. del Carmen - Campeche	160.00	3	1	4121	4.3	65.1	4.3	5.1	1.7	11.2	2.5	4.9	0.9	69.4	4.3	26.3	0.076	0.538	19.511718	-90.700251
T. C. Cd. del Carmen - Campeche	160.00	3	2	4184	4.3	65.4	4.1	5.1	1.6	11.3	2.5	4.8	0.9	69.7	4.1	26.2	0.084	0.538	19.513206	-90.699230
Plaza de Cobro Seybaplaya	174.80	2	1	3824	1.4	64.2	2.5	4.4	3.6	13.3	1.7	7.9	1.0	65.6	2.5	31.9	0.088	0.500	19.636235	-90.671582
Plaza de Cobro Seybaplaya	174.80	2	2	3824	1.4	64.2	2.5	4.4	3.6	13.3	1.7	7.9	1.0	65.6	2.5	31.9	0.088	0.500	19.636235	-90.671582
Plaza de Cobro Seybaplaya	174.80	3	1	6100	7.2	63.8	3.7	3.3	2.6	11.3	1.9	5.5	0.7	71.0	3.7	25.3	0.080	0.612	19.641788	-90.667214
Plaza de Cobro Seybaplaya	174.80	3	2	5095	7.2	63.6	3.8	3.3	2.6	11.3	1.9	5.4	0.9	70.8	3.8	25.4	0.087	0.612	19.641917	-90.667216
T. Der. Periferico Pablo García y Montilla (Libramiento De Campeche)	199.80	1	1	5084	7.6	64.5	4.2	5.6	1.9	8.7	1.8	5.0	0.7	72.1	4.2	23.7	0.094	0.574	19.791303	-90.535501

CAMPECHE

17 CARR: Champotón - Campeche (Cuota)

CLAVE: 04014

RUTA: MEX-180D

AÑO: 2025

LUGAR	ESTACION				CLASIFICACION VEHICULAR EN PORCIENTO														COORDENADAS	
	KM	TE	SC	TDPA	M	A	B	C2	C3	T3S2	T3S3	T3S2R4	OTROS	A	B	C	K'	D	LATITUD	LONGITUD
T. Der. Periférico Pablo García y Montilla (Libramiento De Campeche)	199.80	1	2	4991	7.1	63.9	4.2	6.0	1.8	9.0	1.9	5.6	0.5	71.0	4.2	24.8	0.079	0.574	19.791355	-90.535563

18 CARR: Hopelchén - Dzibalchén

CLAVE: 04572

RUTA: CAM-261

AÑO: 2025

LUGAR	ESTACION				CLASIFICACION VEHICULAR EN PORCIENTO														COORDENADAS	
	KM	TE	SC	TDPA	M	A	B	C2	C3	T3S2	T3S3	T3S2R4	OTROS	A	B	C	K'	D	LATITUD	LONGITUD
Hopelchén	0.00	3	0	1796	9.0	77.5	0.5	10.8	0.8	0.5	0.3	0.5	0.1	86.5	0.5	13.0	0.082	0.568	19.729686	-89.835240
Dzibalchén	41.00																			

19 CARR: Libramiento de Becal

CLAVE: 04010

RUTA: CAM

AÑO: 2025

LUGAR	ESTACION				CLASIFICACION VEHICULAR EN PORCIENTO														COORDENADAS	
	KM	TE	SC	TDPA	M	A	B	C2	C3	T3S2	T3S3	T3S2R4	OTROS	A	B	C	K'	D	LATITUD	LONGITUD
T. C. Dzibalché - Ent. San Bernardo (1º Acceso)	0.00																			
T. C. Campeche - Mérida (2º Acceso)	2.30	1	0	2140	23.0	71.7	1.2	1.8	1.5	0.5	0.3	0.0	0.0	94.7	1.2	4.1	0.079	0.506	20.441284	-90.034455

20 CARR: Libramiento de Pomuch

CLAVE: 04579

RUTA: CAM

AÑO: 2025

LUGAR	ESTACION				CLASIFICACION VEHICULAR EN PORCIENTO														COORDENADAS	
	KM	TE	SC	TDPA	M	A	B	C2	C3	T3S2	T3S3	T3S2R4	OTROS	A	B	C	K'	D	LATITUD	LONGITUD
T. C. Campeche - Mérida (1º Acceso)	0.00	3	1	6284	4.7	70.8	4.1	3.6	2.8	7.8	1.5	3.9	0.8	75.5	4.1	20.4	0.072	0.528	20.122164	-90.177495
T. C. Campeche - Mérida (1º Acceso)	0.00	3	2	6370	4.6	72.4	4.3	3.1	2.4	7.2	1.1	4.0	0.9	77.0	4.3	18.7	0.066	0.528	20.122409	-90.176926
T. C. Campeche - Mérida (2º Acceso)	4.10																			

21 CARR: T. C. (Francisco Escárcega - Champotón) - Yohaltún

CLAVE: 04581

RUTA: CAM

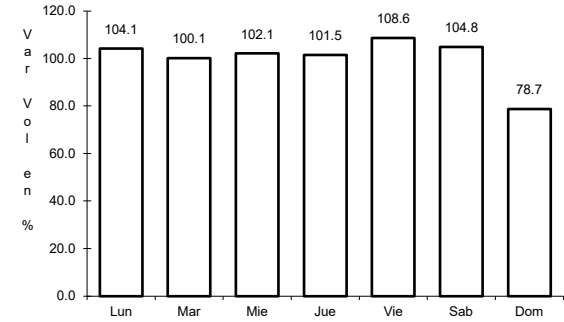
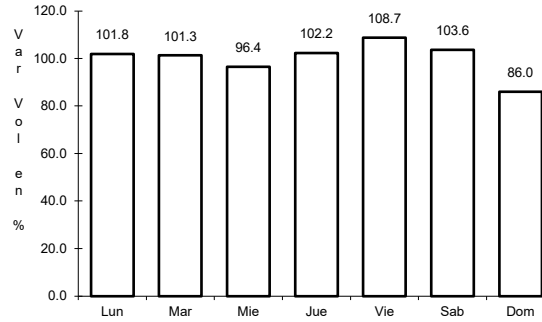
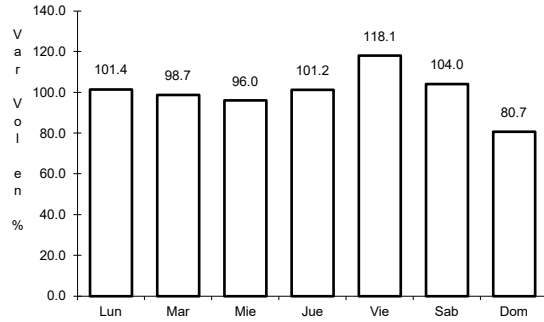
AÑO: 2025

LUGAR	ESTACION				CLASIFICACION VEHICULAR EN PORCIENTO														COORDENADAS	
	KM	TE	SC	TDPA	M	A	B	C2	C3	T3S2	T3S3	T3S2R4	OTROS	A	B	C	K'	D	LATITUD	LONGITUD
T. C. Francisco Escárcega - Champotón	0.00	3	0	1557	23.0	73.0	0.5	2.0	0.8	0.2	0.3	0.2	0.0	96.0	0.5	3.5	0.094	0.531	19.291122	-90.710537
Felipe Carrillo Puerto	36.50	1	0	889	34.0	61.2	0.5	2.9	0.6	0.3	0.4	0.1	0.0	95.2	0.5	4.3	0.087	0.584	19.103658	-90.516022
Felipe Carrillo Puerto	36.50	3	0	1241	26.0	67.5	0.5	1.1	3.7	0.5	0.2	0.4	0.1	93.5	0.5	6.0	0.096	0.521	19.092127	-90.517996
Yohaltún	70.60																			

1 CARR: Campeche - Mérida

CLAVE: 00066

ruta: MEX-180



Km: 0.00

Tipo: 3

Sent: 1

Km: 0.00

Tipo: 3

Sent: 2

Km: 159.00

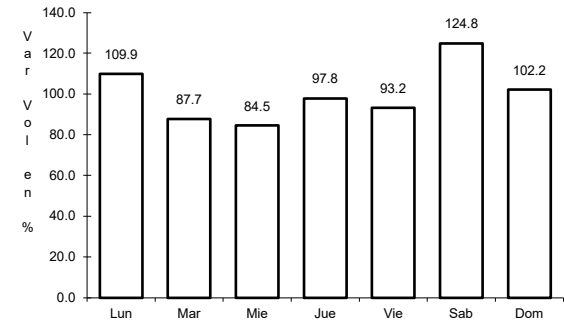
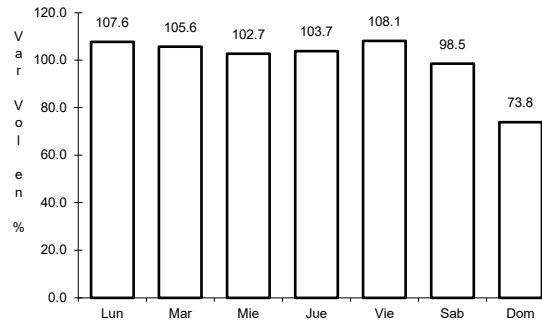
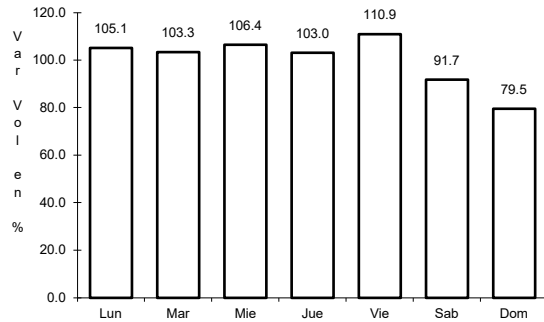
Tipo: 1

Sent: 1

2 CARR: Campeche - Tixmucuy

CLAVE: 04575

ruta: MEX-180



Km: 0.00

Tipo: 3

Sent: 1

Km: 0.00

Tipo: 3

Sent: 2

Km: 42.00

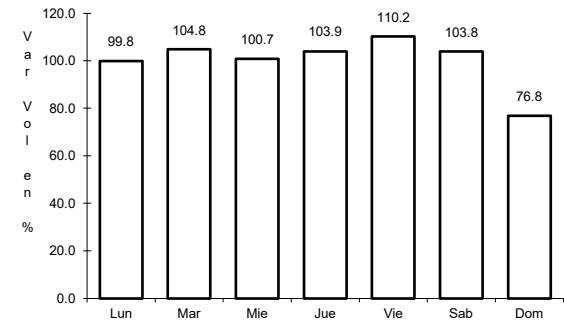
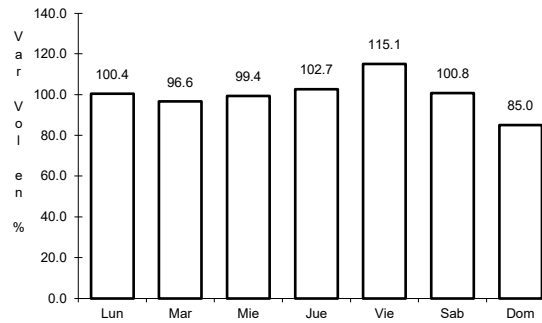
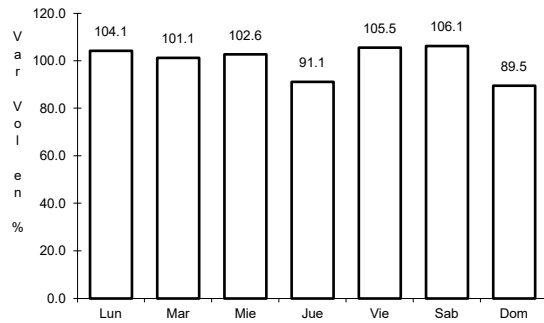
Tipo: 1

Sent: 0

3 CARR: Campeche - Umán

CLAVE: 00164

ruta: MEX-261



Km: 7.85

Tipo: 1

Sent: 0

Km: 120.00

Tipo: 3

Sent: 0

Km: 233.70

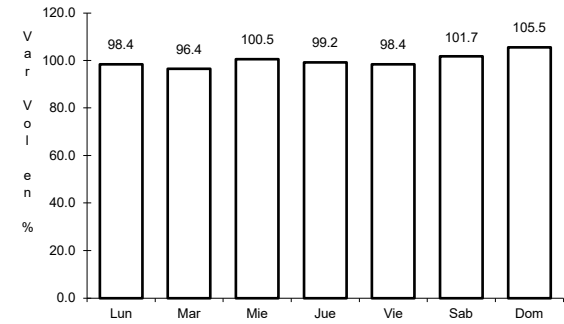
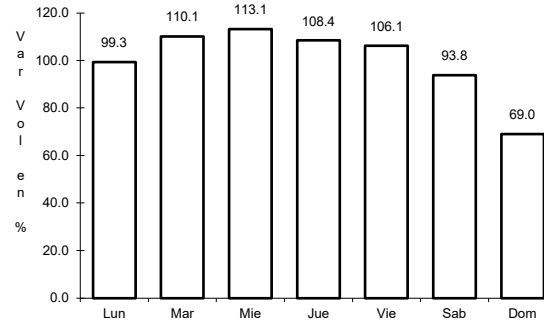
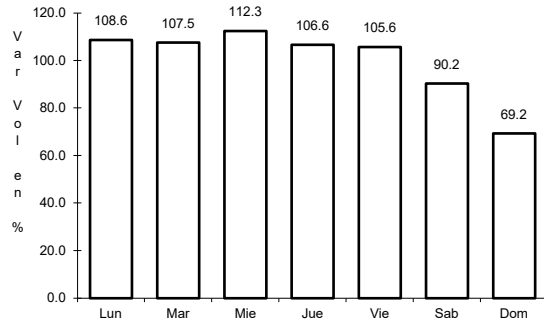
Tipo: 1

Sent: 0

4 CARR: Cd. del Carmen - Campeche

CLAVE: 04065

RUTA: MEX-180



Km: 0.00 Tipo: 3 Sent: 1

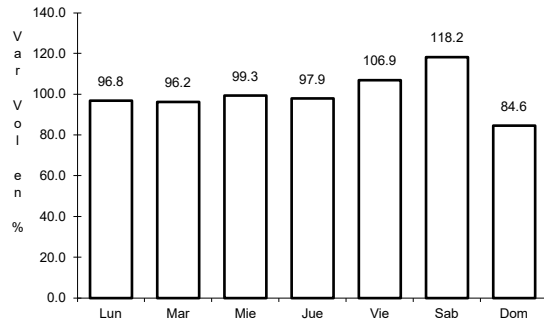
Km: 0.00 Tipo: 3 Sent: 2

Km: 141.80 Tipo: 1 Sent: 0

5 CARR: Chencoyi - Tenabo

CLAVE: 04576

RUTA: MEX-180

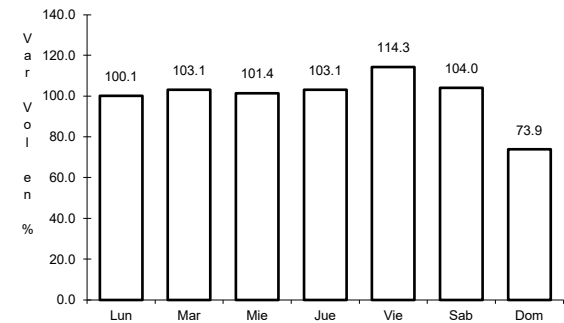
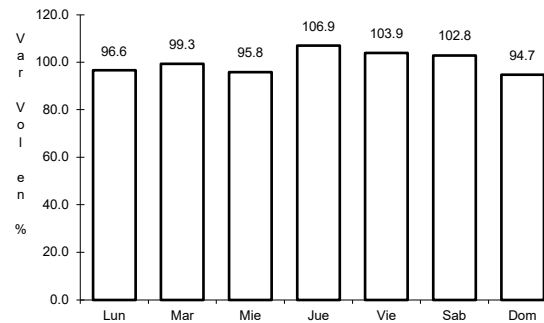
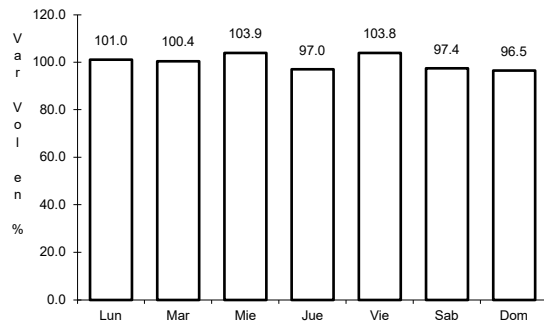


Km: 28.00 Tipo: 1 Sent: 0

6 CARR: Dzitbalché - Ent. San Bernardo

CLAVE: 00162

RUTA: MEX-180



Km: 12.33 Tipo: 1 Sent: 0

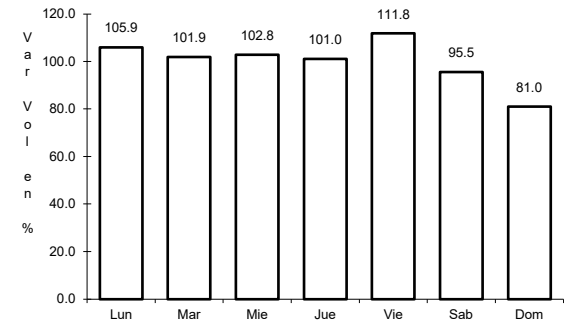
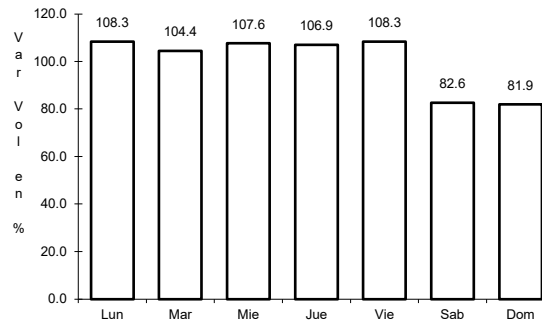
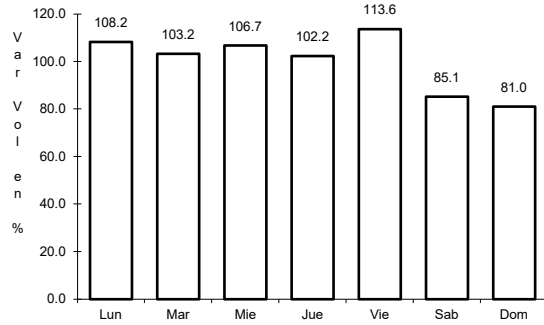
Km: 21.08 Tipo: 1 Sent: 0

Km: 40.36 Tipo: 3 Sent: 0

7 CARR: Francisco Escárcega - Champotón

CLAVE: 04103

ruta: MEX-261



Km: 0.00

Tipo: 3

Sent: 0

Km: 51.40

Tipo: 1

Sent: 0

Km: 81.40

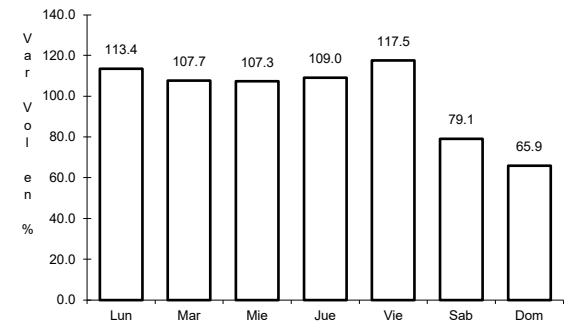
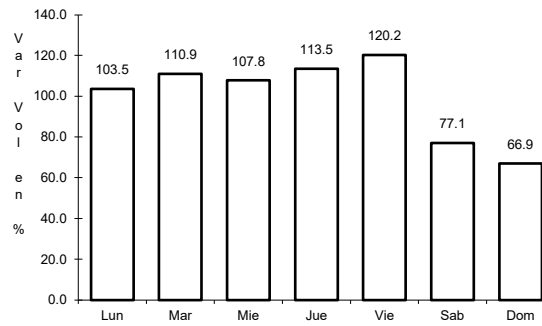
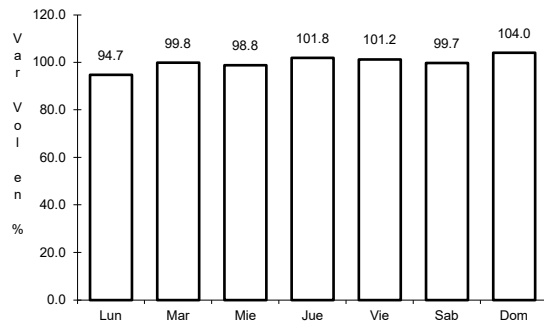
Tipo: 1

Sent: 0

8 CARR: Francisco Escárcega - Chetumal

CLAVE: 00093

ruta: MEX-186-307



Km: 0.00

Tipo: 3

Sent: 0

Km: 277.36

Tipo: 1

Sent: 1

Km: 277.36

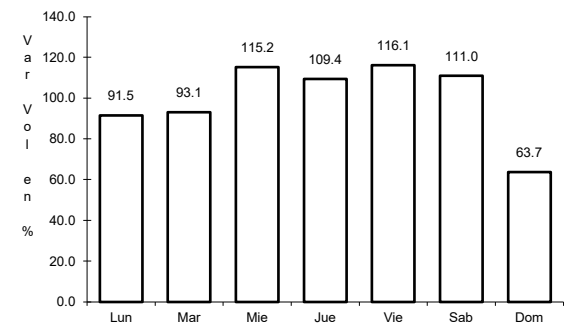
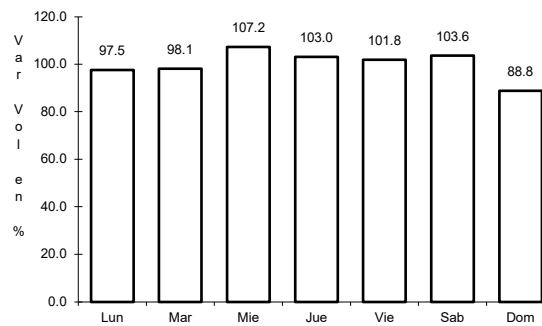
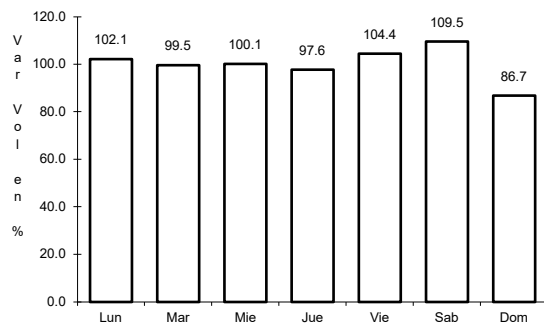
Tipo: 1

Sent: 2

9 CARR: Haltunchén - San Antonio Cayal

CLAVE: 04009

ruta: MEX-180



Km: 0.00

Tipo: 3

Sent: 0

Km: 47.10

Tipo: 1

Sent: 0

Km: 79.00

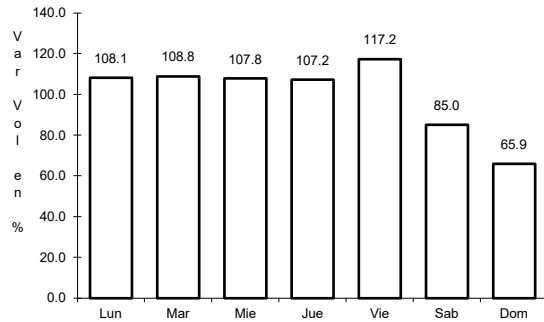
Tipo: 1

Sent: 0

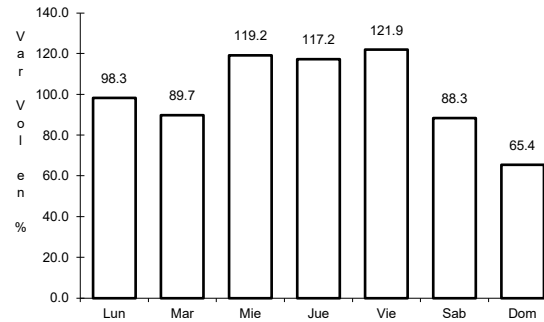
10 CARR: Periférico Pablo García y Montilla (Libramiento de Campeche)

CLAVE: 04573

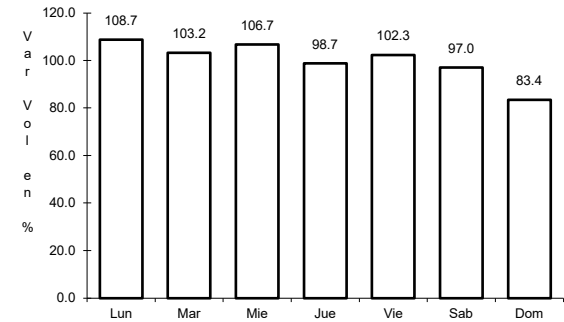
ruta: MEX-202



Km: 0.00 Tipo: 3 Sent: 1



Km: 0.00 Tipo: 3 Sent: 2

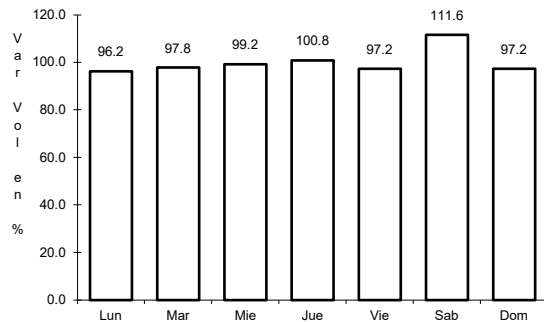


Km: 26.00 Tipo: 1 Sent: 1

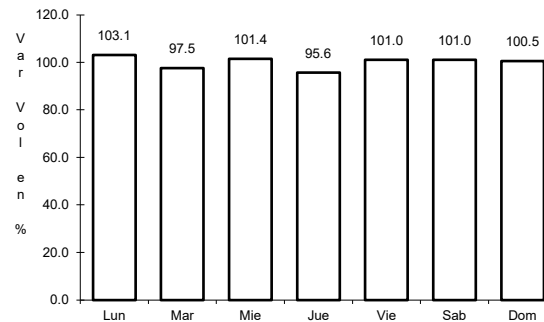
11 CARR: Presidente Díaz Ordaz - Sabancuy

CLAVE: 04570

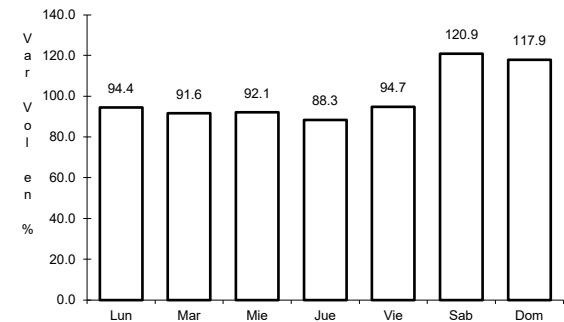
ruta: MEX-186



Km: 0.00 Tipo: 3 Sent: 0



Km: 18.00 Tipo: 1 Sent: 0

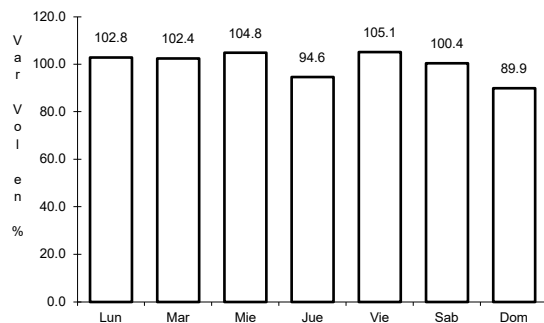


Km: 57.00 Tipo: 1 Sent: 0

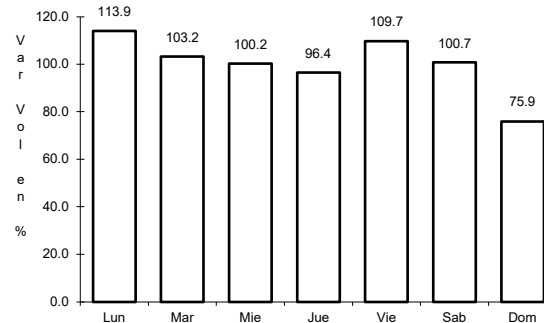
12 CARR: Ramal a Nuevo Coahuila

CLAVE: 04015

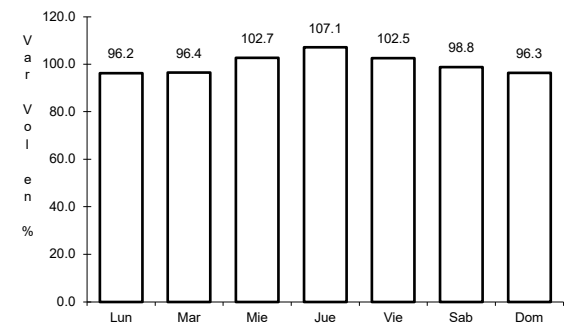
ruta: MEX-186



Km: 0.00 Tipo: 3 Sent: 0



Km: 44.50 Tipo: 3 Sent: 0

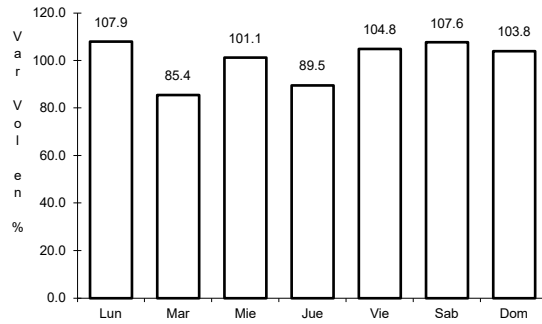


Km: 70.00 Tipo: 1 Sent: 0

13 CARR: Ramal a Ruíz Cortines

CLAVE: 04101

ruta: MEX-180



Km: 1.00

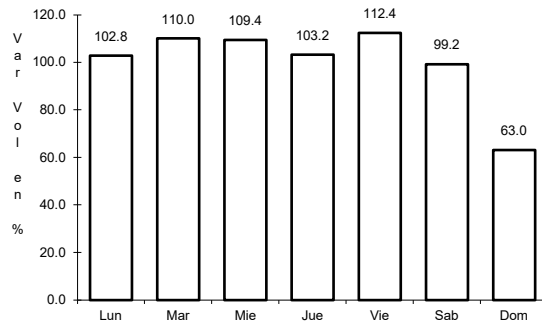
Tipo: 3

Sent: 0

14 CARR: San Marcos - Palizada

CLAVE: 00490

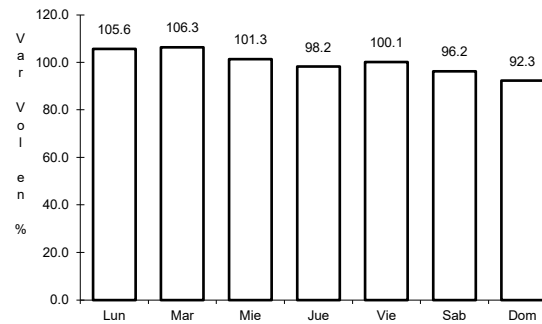
ruta: MEX-186



Km: 0.00

Tipo: 3

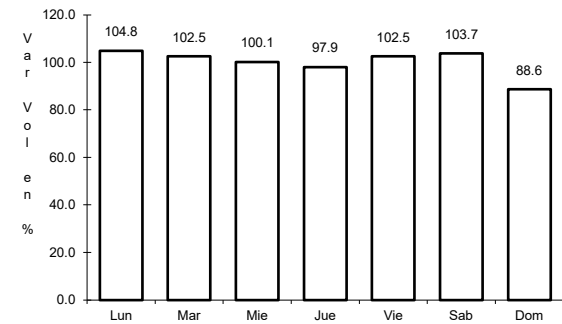
Sent: 0



Km: 46.20

Tipo: 1

Sent: 0



Km: 46.20

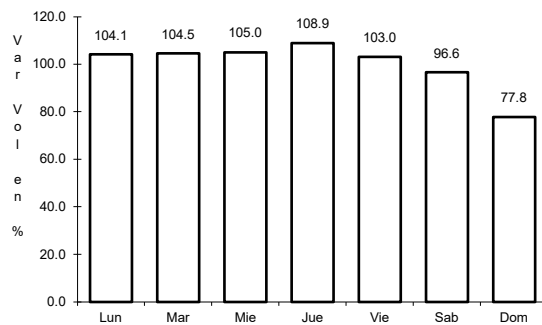
Tipo: 3

Sent: 0

15 CARR: Villahermosa - Cd. del Carmen

CLAVE: 00064

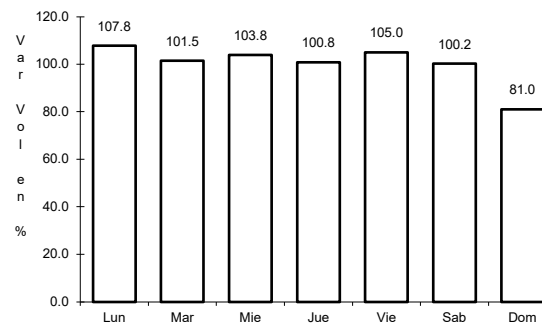
ruta: MEX-180



Km: 4.30

Tipo: 3

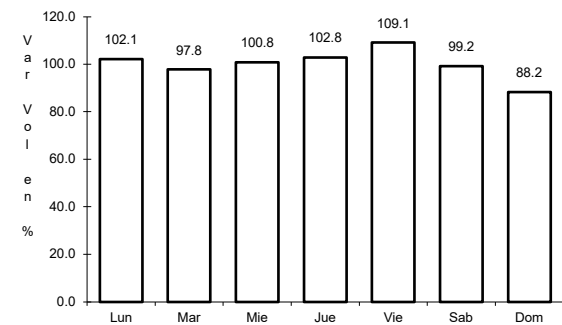
Sent: 1



Km: 4.30

Tipo: 3

Sent: 2



Km: 162.41

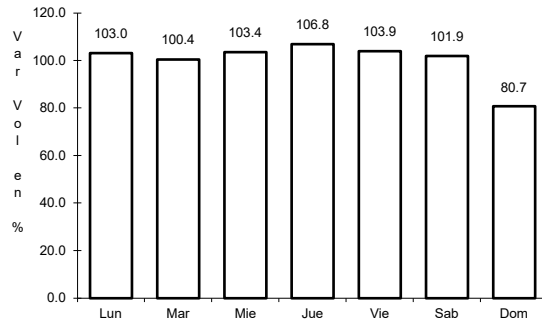
Tipo: 1

Sent: 0

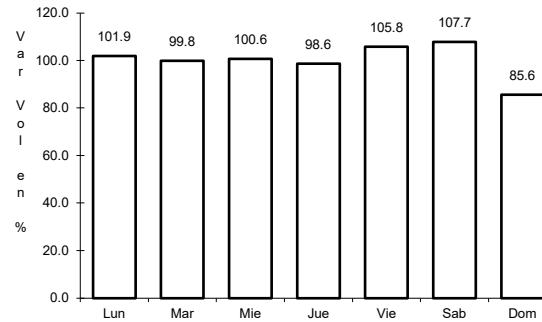
16 CARR: Villahermosa - Francisco Escárcega

CLAVE: 00092

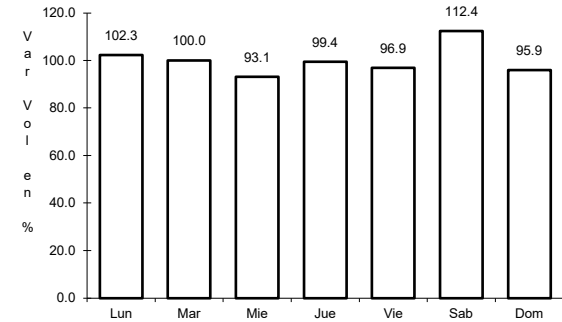
ruta: MEX-186-307



Km: 0.00 Tipo: 3 Sent: 1



Km: 0.00 Tipo: 3 Sent: 2

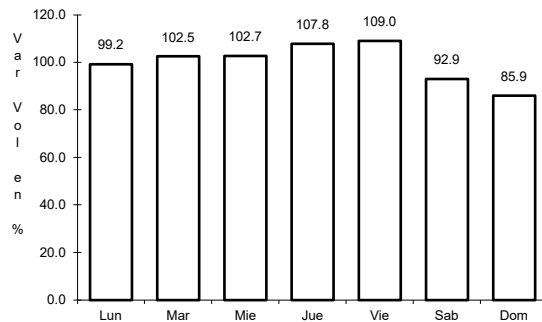


Km: 297.04 Tipo: 1 Sent: 0

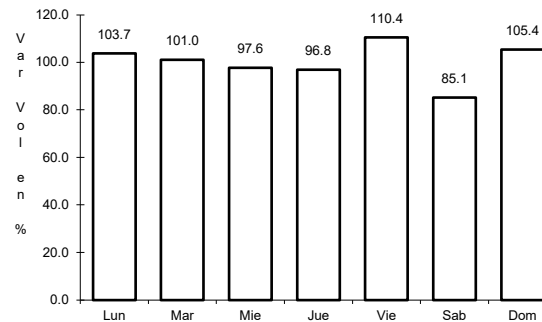
17 CARR: Champotón - Campeche (Cuota)

CLAVE: 04014

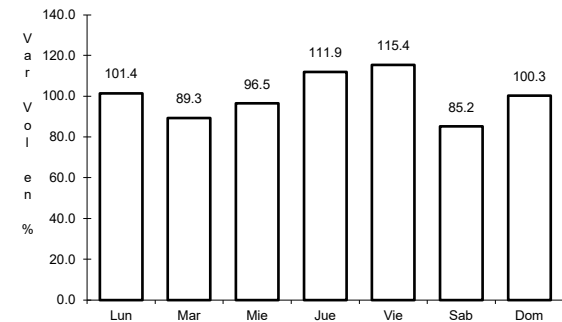
ruta: MEX-180D



Km: 160.00 Tipo: 3 Sent: 1



Km: 160.00 Tipo: 3 Sent: 2

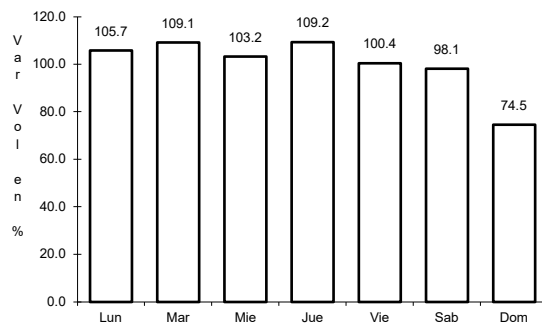


Km: 199.80 Tipo: 1 Sent: 1

18 CARR: Hopelchén - Dzibalchén

CLAVE: 04572

ruta: CAM-261

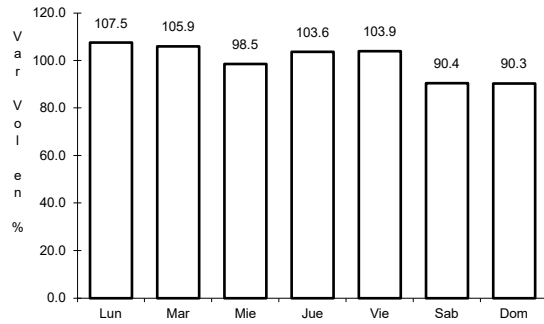


Km: 0.00 Tipo: 3 Sent: 0

19 CARR: Libramiento de Becal

CLAVE: 04010

ruta: CAM



Km: 2.30

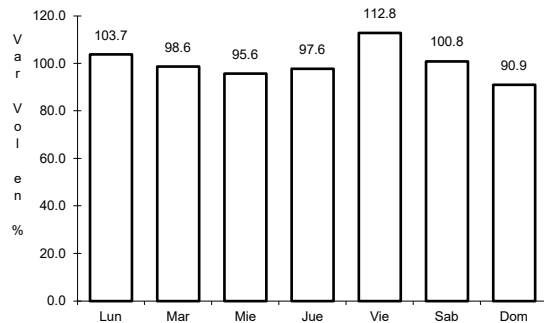
Tipo: 1

Sent: 0

20 CARR: Libramiento de Pomuch

CLAVE: 04579

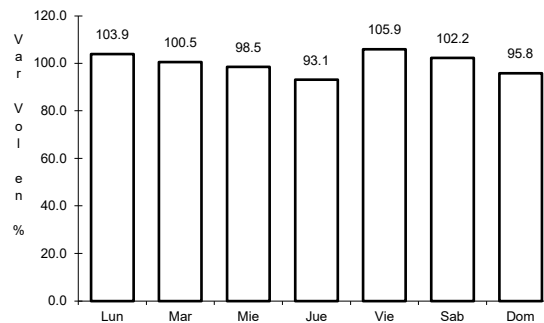
ruta: CAM



Km: 0.00

Tipo: 3

Sent: 1



Km: 0.00

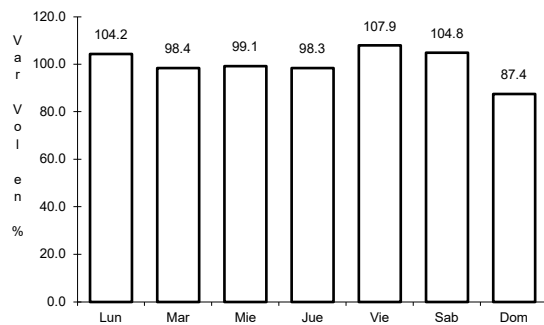
Tipo: 3

Sent: 2

21 CARR: T. C. (Francisco Escárcega - Champotón) - Yohaltún

CLAVE: 04581

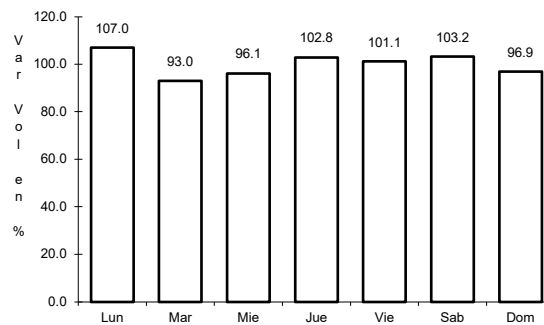
ruta: CAM



Km: 0.00

Tipo: 3

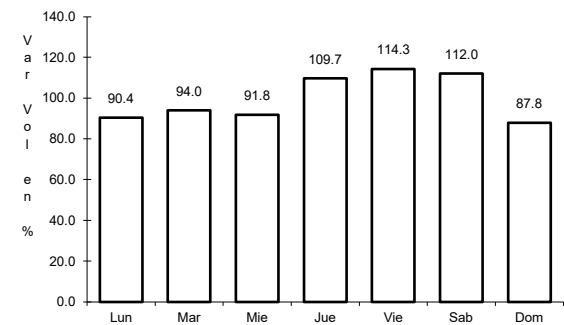
Sent: 0



Km: 36.50

Tipo: 1

Sent: 0



Km: 36.50

Tipo: 3

Sent: 0

